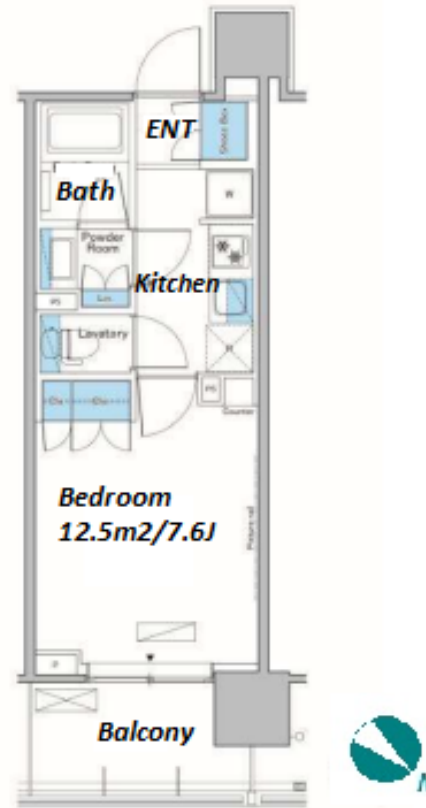
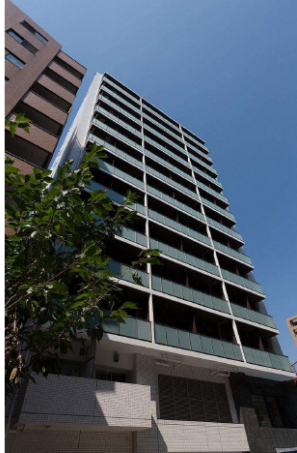


Property Name	LEFOND PROGRES TAKINOGAWA	Unit No.	TYPE	Access	Nishisugamo Station on Mita Line (5 min) Itabashi Station on JR Saikyo Line (8 min)
		1203	Apt.		
Address	6-44-12, Takinogawa, Kita-Ku, Tokyo				

## Stylish Mid-rise Apt. in Takinogawa, near Itabashi



Lease Conditions			
LAYOUT	Studio		
SIZE	25.6 m²/275.55 ft²		
RENT	JPY 120,000 / month		
Management Fee	JPY 10,000/month		
Deposit	2 months	Key Money	1 month
Lease Term	Standard lease for 24 months		
Available	Mid, Aug, 2024		
Renewal Fee	1 month		
Agent Fee	1 month + tax		
Other Info	Key Replacement Fee : JPY20,000 Tax not included / Guarantor Company : TBC / Auto lock / Air-Con / Separated Toilet / Balcony / Internet Included / Penalty Fee for Early Cancellation / Musical Instrument Negotiable / CS/CATV / Flooring / Bathroom dryer		

Building Information			
Completion	Sep, 2015	Earthquake Resistance	New
Structure	RC, 13 floors above		
Car Parking	JPY30,000 + tax / month		
Bicycle Parking	for 1 space ( Included )		
Music Instrument	Negotiable	Pet	Allowed
Facilities	Motorcycle Parking (JPY3,000 + tax / month) / Janitor / Delivery box / Elevator / Security / Close to Station		

Remarks
Renters Insurance : Required / Pet:additional deposit ( 1 month ) / Pet : a small dog or a cat

\*The actual Layout & Size may differ slightly from this floor plans & pictures.



HOUSEREP TOKYO INC.

ハウスレップトーキョー株式会社

#301, 1-4-15, Hiroo, Shibuya-ku, Tokyo 150-0012, Japan

+81 (0)3 6427 5860

inquiry@housserep-tokyo.com

Transaction Type : Intermediate

Agent Fee : 1 month + tax

Website : www.housserep-tokyo.com

