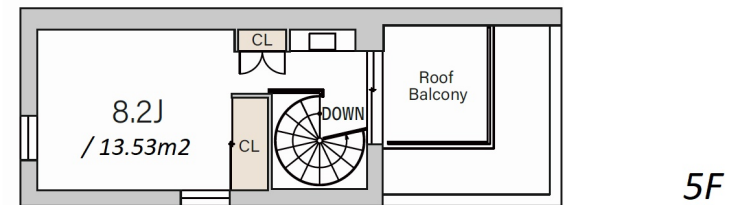
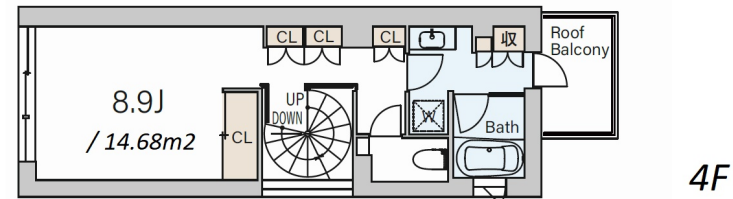
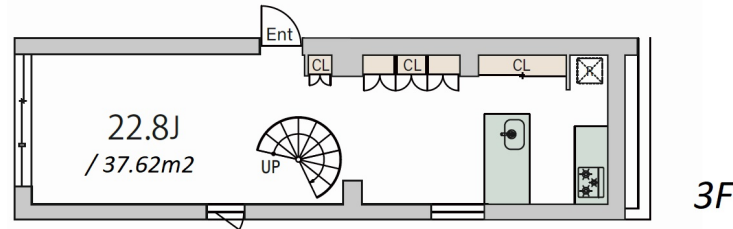
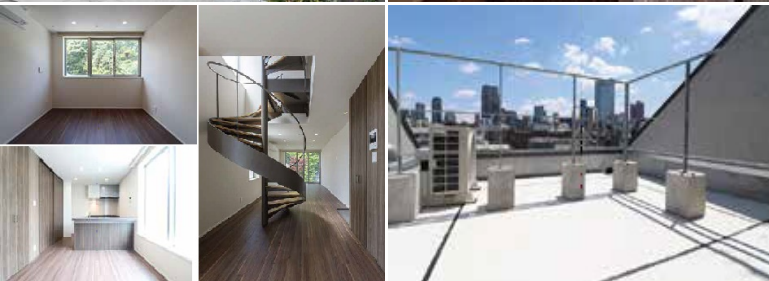
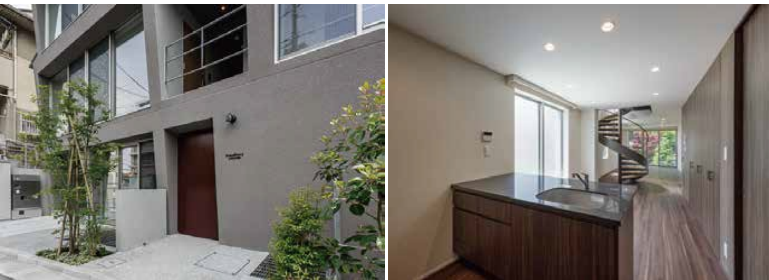


Property Name	GRAND STORY NISHI AZABU	Unit No.	TYPE	Access	Omotesanndou Station on <b>Ginza</b> Line (7 min) Omotesanndou Station on <b>Chiyoda</b> Line (7 min) Omotesanndou Station on <b>Hanzomon</b> Line (7 min)
		303	Apt.		
Address	2-20-11, Nishiazabu, Minato-Ku, Tokyo				

Stylish Low Rise Apt. in Nishi Azabu near Nezu Museum & "Omotesando" stn.



\*The actual Layout & Size may differ slightly from this floor plans & pictures.

Lease Conditions	
LAYOUT	2 BR
SIZE	94.21 m <sup>2</sup> /1014.06 ft <sup>2</sup>
RENT	JPY 670,000 / month
Management Fee	JPY20,000/month
Deposit	1 month
Key Money	-
Lease Term	Standard lease for 24 months
Available	Negotiable
Renewal Fee	1 month
Agent Fee	1 month + tax
Other Info	Key Replacement Fee : JPY20,000 Tax not included / Guarantor Company : TBC / No Key Money / Auto lock / Air-Con / Separated Toilet / Balcony / Roof Balcony / CS/CATV / Flooring / Bathroom dryer / Corner Unit

Building Information			
Completion	May, 2022	Earthquake Resistance	New
Structure	RC, 5 floors above and 1 basement floors		
Car Parking	JPY66,000/ month		
Bicycle Parking	-		
Music Instrument	-	Pet	Allowed
Facilities	Delivery box / Elevator / 24h Garbage Drop-off / Low-rise / Newly-built (~7 y/o)		

Remarks
Renters Insurance : Required / Pet:additional deposit ( 1 month )



HOUSEREP TOKYO INC.

ハウズレップトーキョー株式会社

#301, 1-4-15, Hiroo, Shibuya-ku, Tokyo 150-0012, Japan

+81 (0)3 6427 5860

inquiry@housserep-tokyo.com

Transaction Type : Intermediate

Agent Fee : 1 month + tax

Website : www.housserep-tokyo.com

