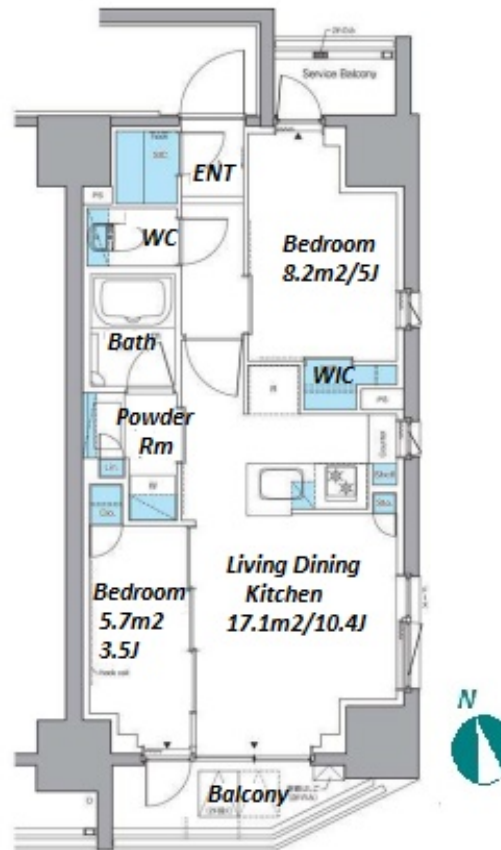
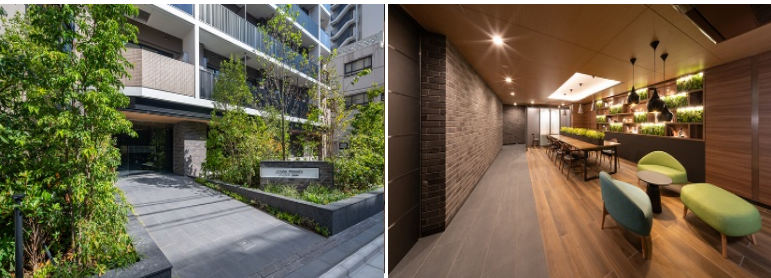


Property Name	LEFOND PROGRES UENO INARICHO	Unit No.	TYPE	Access	Inarichou Station on <b>Ginza</b> Line (5 min) Ueno Station on <b>JR Yamanote</b> Line (11 min)
	Address	2-2-2, Motoasakusa, Taito-Ku, Tokyo	206		

## Mid-rise Apt. near Ueno



Lease Conditions		
LAYOUT	2 BR	
SIZE	43.68 m <sup>2</sup> /470.16 ft <sup>2</sup>	
RENT	JPY 210,000 / month	
Management Fee	JPY20,000/month	
Deposit	2 months	Key Money 1 month
Lease Term	Standard lease for 24 months	
Available	Mid, Sep, 2024	
Renewal Fee	1 month	
Agent Fee	1 month + tax	
Other Info	Key Replacement Fee : JPY20,000 Tax not included / Guarantor Company : TBC / Auto lock / Air-Con / Separated Toilet / Balcony / Internet Included / Musical Instrument Negotiable / CS/CATV / Flooring / Bathroom dryer / WIC	

Building Information			
Completion	Sep, 2022	Earthquake Resistance	New
Structure	RC, 15 floors above		
Car Parking	extra charge		
Bicycle Parking	for 1 space ( Included )		
Music Instrument	Negotiable	Pet	Allowed
Facilities	Motorcycle Parking (TBC) / Delivery box / Elevator / Security / Close to Station / 24h Garbage Drop-off / Newly-built (~1 y/o)		

Remarks
Renters Insurance : Required / Pet:additional deposit ( 1 month ) / Pet : a small dog or a cat

\*The actual Layout & Size may differ slightly from this floor plans & pictures.



HOUSEREP TOKYO INC.

ハウスレップトーキョー株式会社

#301, 1-4-15, Hiroo, Shibuya-ku, Tokyo 150-0012, Japan

+81 (0)3 6427 5860

inquiry@housserrep-tokyo.com

Transaction Type : Intermediate

Agent Fee : 1 month + tax

Website : www.housserrep-tokyo.com

