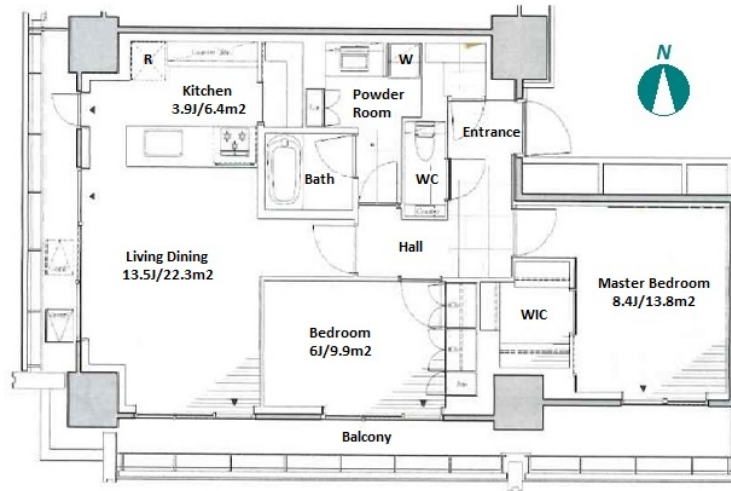


Property Name	LIVIO RESIDENCE NISHIAZABU	Unit No.	TYPE	Access	Hiroo Station on Hibiya Line (11 min) Roppongi Station on Hibiya Line (11 min) Omotesandou Station on Ginza Line (14 min)
		1206	Apt.		
Address	4-16-3, Nishiazabu, Minato-Ku, Tokyo				

A newly-built 32-story high-rise tower in Nishiazabu, Minato-ku area



Lease Conditions	
LAYOUT	2 BR
SIZE	79.93 m²/860.35 ft²
RENT	JPY 610,000 / month
Management Fee	-
Deposit	4 months
Key Money	-
Lease Term	Fixed term lease for 24 months
Available	Now
Renewal Fee	-
Agent Fee	1 month + tax
Other Info	Guarantor Company : TBC / Auto lock / Air-Con / Separated Toilet / Balcony / Internet Included / CS/CATV / Flooring / Floor Heating / Dishwasher / Bathroom dryer / WIC / Corner Unit

Building Information			
Completion	Feb, 2024	Earthquake Resistance	New
Structure	RC, 32 floors above		
Car Parking	TBC		
Bicycle Parking	JPY300 ~ 1,000/ month		
Music Instrument	-	Pet	Negotiable
Facilities	Motorcycle Parking (JPY10,000 + tax / month) / Gym ((Included)) / Within 20 min walk to Roppongi / Near Large Parks / Concierge / Delivery box / Elevator / Sky lounge / Security / 24h Garbage Drop-off / Fitness / Gym / High-rise / Newly-built (~1 y/o)		

Remarks
Fixed term lease : Re-ccontract fee : 0.5 month / Renters Insurance : Required

*The actual Layout & Size may differ slightly from this floor plans & pictures.



HOUSEREP TOKYO INC.

ハウスレップトーキョー株式会社

#301, 1-4-15, Hiroo, Shibuya-ku, Tokyo 150-0012, Japan

+81 (0)3 6427 5860

inquiry@housserrep-tokyo.com

Transaction Type : Intermediate

Agent Fee : 1 month + tax

Website : www.housserrep-tokyo.com

