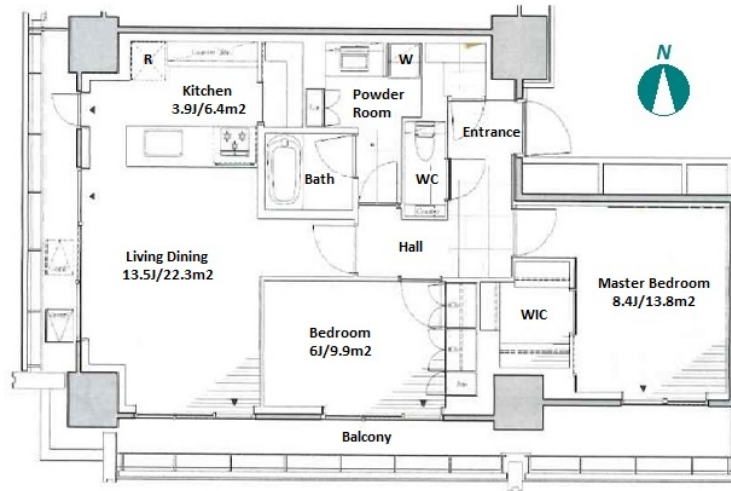


|               |                                      |          |      |        |   |
|---------------|--------------------------------------|----------|------|--------|---|
| Property Name | LIVIO RESIDENCE NISHIAZABU           | Unit No. | TYPE | Access | Hiroo Station on Hibiya Line (11 min)<br>Roppongi Station on Hibiya Line (11 min)<br>Omotesandou Station on Ginza Line (14 min) |
|               |                                      | 1106     | Apt. |        |   |
| Address       | 4-16-3, Nishiazabu, Minato-Ku, Tokyo |          |      |        |   |

A newly-built 32-story high-rise tower in Nishiazabu, Minato-ku area



| Lease Conditions |   |
|------------------|---|
| LAYOUT           | 2 BR  |
| SIZE             | 79.93 m <sup>2</sup> /860.35 ft <sup>2</sup>  |
| RENT             | JPY 605,000 / month   |
| Management Fee   | -   |
| Deposit          | 4 months  |
| Key Money        | -   |
| Lease Term       | Fixed term lease for 24 months  |
| Available        | Now   |
| Renewal Fee      | -   |
| Agent Fee        | 1 month + tax   |
| Other Info       | Guarantor Company : TBC / Auto lock / Air-Con / Separated Toilet / Balcony / Internet Included / CS/CATV / Flooring / Floor Heating / Dishwasher / Bathroom dryer / WIC / Corner Unit |

| Building Information |   |                       |            |
|----------------------|---|-----------------------|------------|
| Completion           | Feb, 2024   | Earthquake Resistance | New        |
| Structure            | RC, 32 floors above   |                       |            |
| Car Parking          | TBC   |                       |            |
| Bicycle Parking      | JPY300 ~ 1,000/ month   |                       |            |
| Music Instrument     | -   | Pet                   | Negotiable |
| Facilities           | Motorcycle Parking (JPY10,000 + tax / month) / Gym ((Included)) / Within 20 min walk to Roppongi / Near Large Parks / Concierge / Delivery box / Elevator / Sky lounge / Security / 24h Garbage Drop-off / Fitness / Gym / High-rise / Newly-built (~1 y/o) |                       |            |

| Remarks  |
|--|
| Fixed term lease : Re-ccontract fee : 0.5 month / Renters Insurance : Required |

\*The actual Layout & Size may differ slightly from this floor plans & pictures.



HOUSEREP TOKYO INC.

ハウスレップトーキョー株式会社

#301, 1-4-15, Hiroo, Shibuya-ku, Tokyo 150-0012, Japan

+81 (0)3 6427 5860

inquiry@housserrep-tokyo.com

Transaction Type : Intermediate

Agent Fee : 1 month + tax

Website : www.housserrep-tokyo.com

