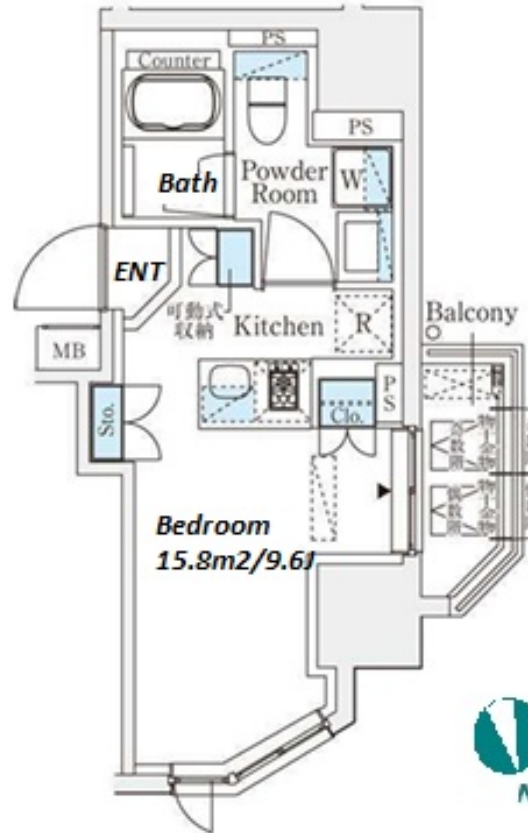


Property Name	ASAKUSATAWARAMACHI RESIDENCE	Unit No.	TYPE	Access	Tawaramachi Station on Ginza Line (4 min) Kuramae Station on Oedo Line (4 min) Asakusa Station on Toei Asakusa Line (7 min)
		605	Apt.		
Address	3-9-8, Kotobuki, Taito-Ku, Tokyo				



## Lease Conditions

LAYOUT	Studio		
SIZE	25.19 m²/271.14 ft²		
RENT	JPY 95,000 / month		
Management Fee	JPY10,000/month		
Deposit	2 months	Key Money	1 month
Lease Term	Standard lease for 24 months		
Available	End, Aug, 2024		
Renewal Fee	1 month		
Agent Fee	1 month + tax		
Other Info	Key Replacement Fee : JPY20,000 Tax not included / Guarantor Company : TBC / Auto lock / Air-Con / Separated Toilet / Balcony / Flooring		

## Building Information

Completion	Jul, 2014	Earthquake Resistance	New
Structure	RC, 15 floors above		
Car Parking	TBC		
Bicycle Parking	for 1 space ( Included )		
Music Instrument	-	Pet	-
Facilities	Motorcycle Parking (TBC) / Delivery box / Elevator / Security / Close to Station / High-rise		

## Remarks

Renters Insurance : Required
------------------------------

\*The actual Layout & Size may differ slightly from this floor plans & pictures.



HOUSEREP TOKYO INC.

ハウスレップトーキョー株式会社

#301, 1-4-15, Hiroo, Shibuya-ku, Tokyo 150-0012, Japan

+81 (0)3 6427 5860

inquiry@housserrep-tokyo.com

Transaction Type : Intermediate

Agent Fee : 1 month + tax

Website : www.housserrep-tokyo.com

