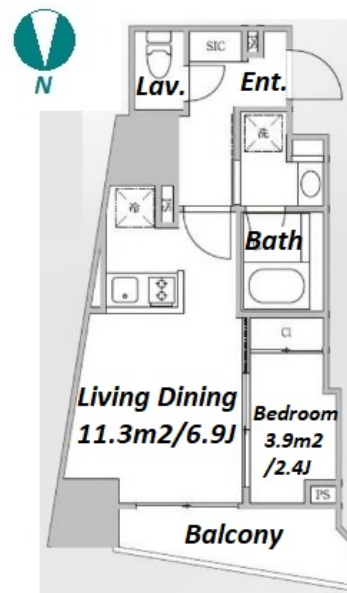
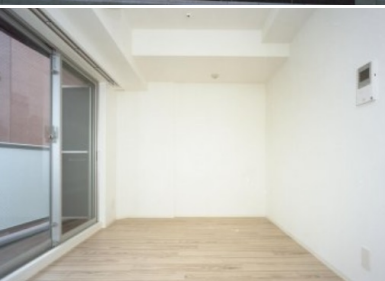
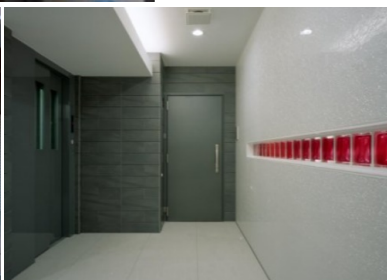


Property Name	RESIDIA OCHANOMIZU II	Unit No.	TYPE	Access	Suehirochou Station on Ginza Line (5 min) Ochanomizu Station on JR Chuo Line Rapid Service (8 min) Akihabara Station on JR Yamanote Line (9 min)
		401	Apt.		
Address	2-9-5, Sotokanda, Chiyoda-Ku, Tokyo				

Mid-rise apartment near Ochanomizu and Akihabara



Lease Conditions			
LAYOUT	1 BR		
SIZE	30.27 m²/325.82 ft²		
RENT	JPY 160,000 / month		
Management Fee	JPY 10,000/month		
Deposit	2 months	Key Money	1 month
Lease Term	Standard lease for 24 months		
Available	End, Jul, 2024		
Renewal Fee	1 month		
Agent Fee	1 month + tax		
Other Info	Guarantor Company : TBC / Auto lock / Air-Con / Separated Toilet / Balcony / Penalty Fee for Early Cancellation / Flooring / Bathroom dryer		

Building Information			
Completion	Mar, 2015	Earthquake Resistance	New
Structure	RC, 10 floors above		
Car Parking	-		
Bicycle Parking	-		
Music Instrument	-	Pet	N/A
Facilities	Delivery box / Elevator / Security / Close to Station		

Remarks
Renters Insurance : Required

*The actual Layout & Size may differ slightly from this floor plans & pictures.



HOUSEREP TOKYO INC.

ハウスレップトーキョー株式会社

#301, 1-4-15, Hiroo, Shibuya-ku, Tokyo 150-0012, Japan

+81 (0)3 6427 5860

inquiry@housserrep-tokyo.com

Transaction Type : Intermediate

Agent Fee : 1 month + tax

Website : www.housserrep-tokyo.com

