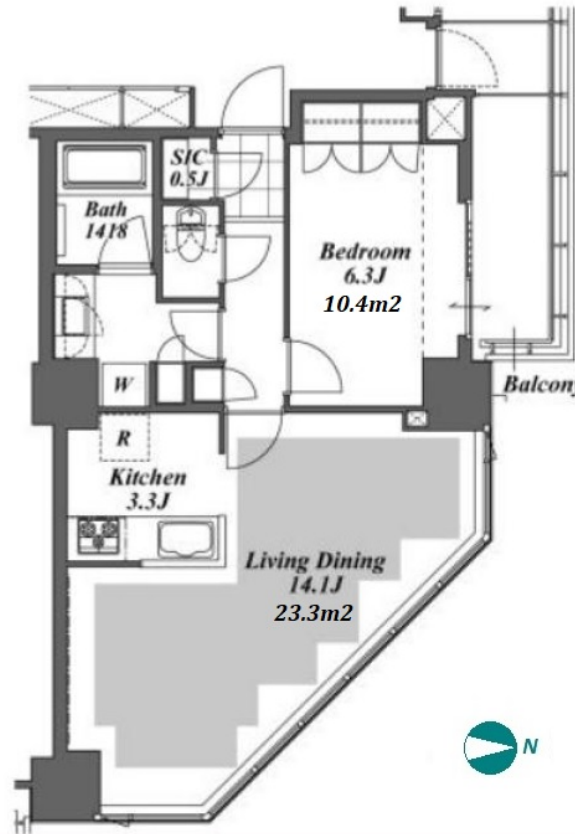


Property Name	BRILLIA IST TOWER KACHIDOKI	Unit No.	TYPE	Access	Kachidoki Station on Oedo Line (3 min) Tsukishima Station on Yurakucho Line (10 min) Tsukiji Station on Hibiya Line (12 min)
		31F	Apt.		
Address	1-3-1, Kachidoki, Chuo-Ku, Tokyo				



Lease Conditions

LAYOUT	1 BR		
SIZE	54.88 m ² /590.72 ft ²		
RENT	JPY 243,000 / month		
Management Fee	JPY15,000/month		
Deposit	2 months	Key Money	1 month
Lease Term	Fixed term lease for 24 months		
Available	End, Jul, 2024		
Renewal Fee	-		
Agent Fee	1 month + tax		
Other Info	Key Replacement Fee : JPY15,000 Tax not included / Auto lock / Air-Con / Separated Toilet / Balcony / Internet Included / Penalty Fee for Early Cancellation / Nice Views / Flooring / Floor Heating / Bathroom dryer / Corner Unit		

Building Information

Completion	Oct, 2011	Earthquake Resistance	New
Structure	RC, 45 floors above and 2 basement floors		
Car Parking	-		
Bicycle Parking	-		
Music Instrument	-	Pet	-
Facilities	Front desk / Concierge / Delivery box / Elevator / Security / Close to Station / Fitness / Gym / High-rise		

Remarks

Renters Insurance : Required

*The actual Layout & Size may differ slightly from this floor plans & pictures.



HOUSEREP TOKYO INC.

ハウスレップトーキョー株式会社

#301, 1-4-15, Hiroo, Shibuya-ku, Tokyo 150-0012, Japan

+81 (0)3 6427 5860

inquiry@housserrep-tokyo.com

Transaction Type : Intermediate

Agent Fee : 1 month + tax

Website : www.housserrep-tokyo.com

