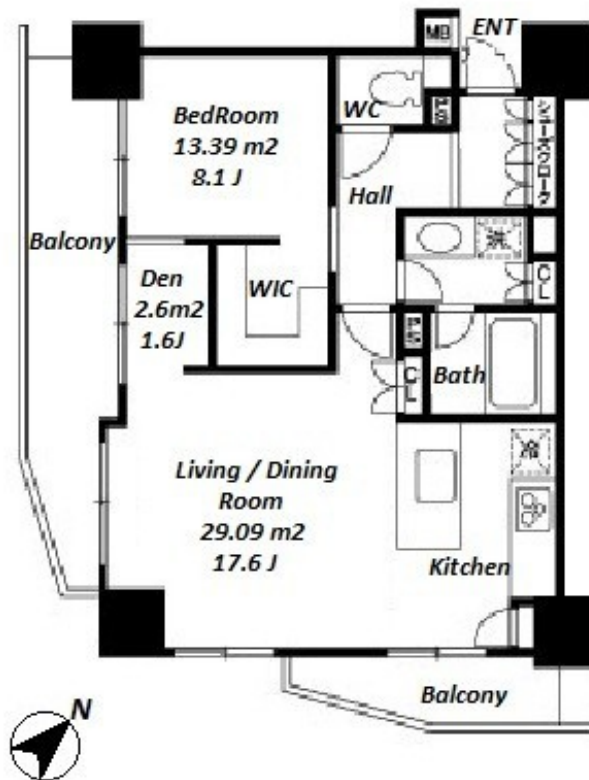
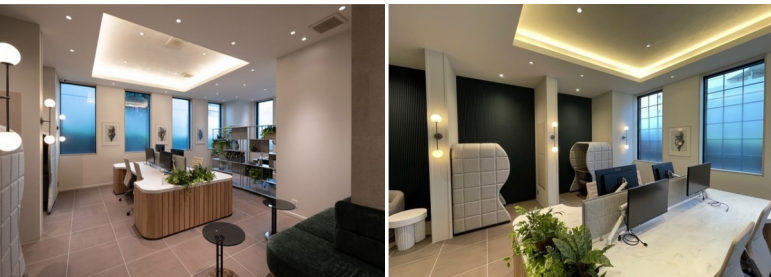


Property Name	LA SANTE GOTANDA (GLENPARK G-WEST)	Unit No.	TYPE	Access	Oosakihirokouji Station on Tokyu Ikegami Line (5 min) Gotanda Station on JR Yamanote Line (9 min) Gotanda Station on Toei Asakusa Line (11 min)
		1207	Apt.		
Address	8-9-11, Nishigotanda, Shinagawa-Ku, Tokyo				

High Quality Tower Residence in Gotanda / Shinagawa



Lease Conditions		
LAYOUT	1 BR+Den	
SIZE	61 m ² /656.59 ft ²	
RENT	JPY 285,000 / month	
Management Fee	JPY 15,000/month	
Deposit	2 months	Key Money 1 month
Lease Term	Standard lease for 24 months	
Available	Mid, Aug, 2024	
Renewal Fee	1 month	
Agent Fee	1 month + tax	
Other Info	Key Replacement Fee : JPY20,000 Tax not included / Guarantor Company : TBC / Auto lock / Air-Con / Separated Toilet / Balcony / Penalty Fee for Early Cancellation / Flooring / Floor Heating / Bathroom dryer / WIC / Corner Unit	

Building Information			
Completion	Jan, 2006	Earthquake Resistance	New
Structure	RC, 15 floors above		
Car Parking	JPY30,000/ month		
Bicycle Parking	N/A		
Music Instrument	-	Pet	Negotiable
Facilities	Delivery box		

Remarks
Renters Insurance : Required / Pet : additional 1 month for deposit

*The actual Layout & Size may differ slightly from this floor plans & pictures.



HOUSEREP TOKYO INC.

ハウスレップトーキョー株式会社

#301, 1-4-15, Hiroo, Shibuya-ku, Tokyo 150-0012, Japan

+81 (0)3 6427 5860

inquiry@housserrep-tokyo.com

Transaction Type : Intermediate

Agent Fee : 1 month + tax

Website : www.housserrep-tokyo.com

