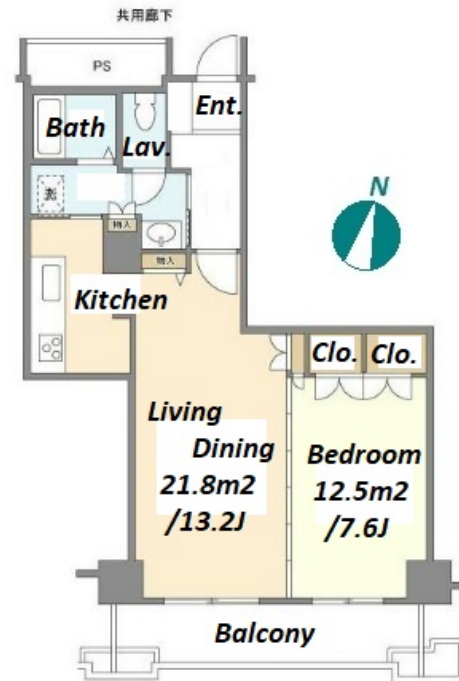


Property Name	TORNARE NIHONBASHI HAMACHO	Unit No.	TYPE	Access	Suitennguumae Station on Hanzomon Line (6 min)
		2106	Apt.		
Address	3-3-1, Nihombashihamacho, Chuo-Ku, Tokyo				

Tower Residence in Nihonbashi-hamacho, near Suitengu stn.



Lease Conditions			
LAYOUT	1 BR		
SIZE	60.22 m ² /648.2 ft ²		
RENT	JPY 235,000 / month		
Management Fee	JPY10,000/month		
Deposit	1 month	Key Money	1 month
Lease Term	Standard lease for 24 months		
Available	End, Jul, 2024		
Renewal Fee	1 month		
Agent Fee	1 month + tax		
Other Info	Key Replacement Fee : JPY30,000 Tax not included / Guarantor Company : TBC / Auto lock / Air-Con / Separated Toilet / Balcony / Internet (Extra Charge) / Flooring / IH Stoves / Bathroom dryer		

Building Information			
Completion	Aug, 2005	Earthquake Resistance	New
Structure	SRC, 47 floors above		
Car Parking	TBC		
Bicycle Parking	(Included)		
Music Instrument	-	Pet	-
Facilities	Motorcycle Parking (TBC) / Trunk Room ((Included)) / Within 20 min to Tokyo station by car / Near Large Parks / Janitor / Delivery box / Elevator / 24h Garbage Drop-off / High-rise		

Remarks
Renters Insurance : Required

*The actual Layout & Size may differ slightly from this floor plans & pictures.



HOUSEREP TOKYO INC.

ハウズレップトーキョー株式会社

#301, 1-4-15, Hiroo, Shibuya-ku, Tokyo 150-0012, Japan

+81 (0)3 6427 5860

inquiry@housserep-tokyo.com

Transaction Type : Intermediate

Agent Fee : 1 month + tax

Website : www.housserep-tokyo.com

