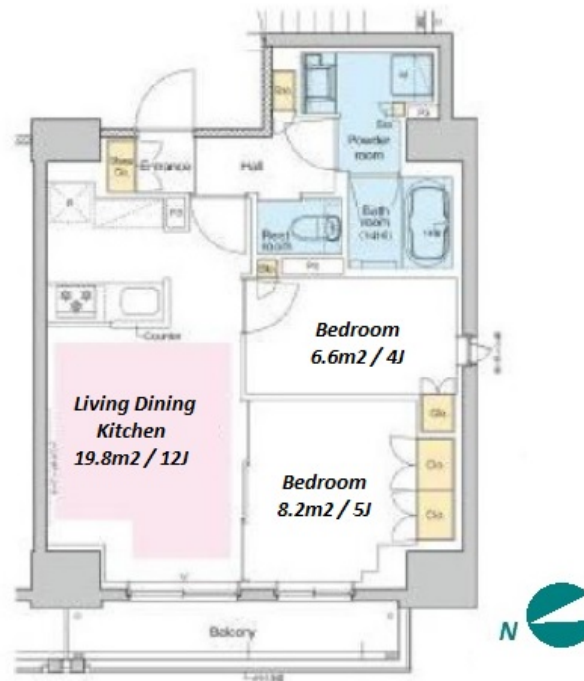


Property Name	PROUD FLAT TORANOMON	Unit No.	TYPE	Access	Toranomom Hills Station on Hibiya Line (7 min) Onarimonn Station on Mita Line (7 min) Shinnbashi Station on JR Yamanote Line (11 min)
		1501	Apt.		
Address	3-12-9, Nishishimbashi, Minato-Ku, Tokyo				

Stylish & Modern Apt. near "Toranomom Hills"



Lease Conditions	
LAYOUT	2 BR
SIZE	50.8 m²/546.8 ft²
RENT	JPY 334,000 / month
Management Fee	JPY 15,000/month
Deposit	1 month
Key Money	1 month
Lease Term	Standard lease for 24 months
Available	End, Jul, 2024
Renewal Fee	1 month
Agent Fee	1 month + tax
Other Info	Key Replacement Fee : JPY30,000 Tax not included / Auto lock / Air-Con / Separated Toilet / Balcony / Internet Included / Penalty Fee for Early Cancellation / Nice Views / Flooring / Floor Heating / Bathroom dryer / Corner Unit

Building Information	
Completion	Aug, 2023
Earthquake Resistance	New
Structure	RC, 15 floors above
Car Parking	N/A
Bicycle Parking	extra charge
Music Instrument	-
Pet	-
Facilities	Within 20 min to Roppongi by train / Janitor / Delivery box / Elevator / Security / 24h Garbage Drop-off / Newly-built (~7 y/o) / Newly-built (~1 y/o)

Remarks
Renters Insurance : Required / Bicycle parking : 5,000yen+tax for registration

*The actual Layout & Size may differ slightly from this floor plans & pictures.



HOUSEREP TOKYO INC.

ハウスレップトキョー株式会社

#301, 1-4-15, Hiroo, Shibuya-ku, Tokyo 150-0012, Japan

+81 (0)3 6427 5860

inquiry@housserrep-tokyo.com

Transaction Type : Intermediate

Agent Fee : 1 month + tax

Website : www.housserrep-tokyo.com

