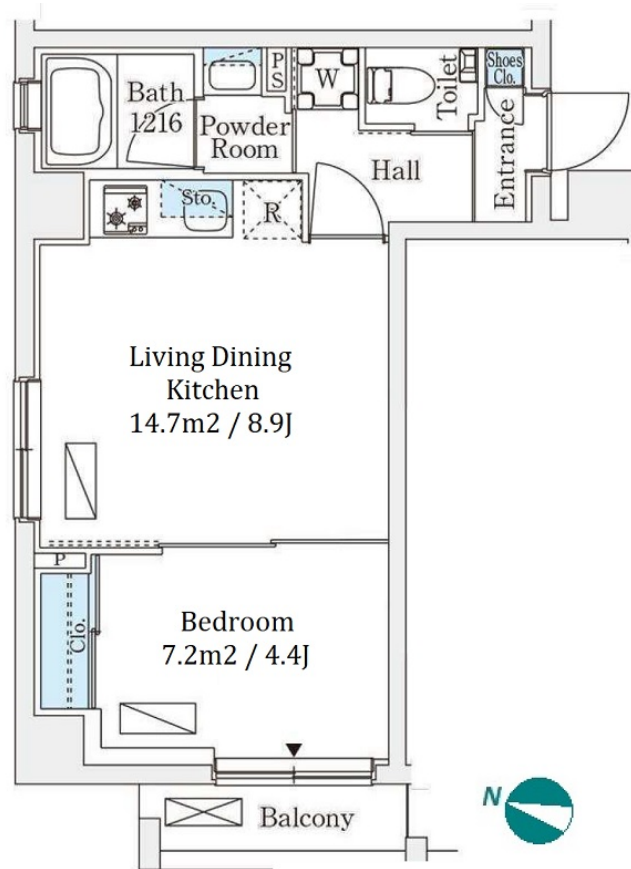


Property Name	FULLHOUSE IIDABASHI	Unit No.	TYPE	Access	Iidabashi Station on JR Chuo Line Rapid Service (7 min) Iidabashi Station on Tozai Line (7 min)
		102	Apt.		
Address	5-9, Shinogawamachi, Shinjuku-Ku, Tokyo				



Lease Conditions	
LAYOUT	1 BR
SIZE	33.08 m²/356.07 ft²
RENT	JPY 170,000 / month
Management Fee	JPY18,000/month
Deposit	1 month
Key Money	-
Lease Term	Standard lease for 24 months
Available	Now
Renewal Fee	1 month
Agent Fee	1 month + tax
Other Info	Guarantor Company : TBC / No Key Money / Auto lock / Air-Con / Separated Toilet / Balcony / Internet Included / Penalty Fee for Early Cancellation / Flooring / Bathroom dryer

Building Information			
Completion	Feb, 2024	Earthquake Resistance	New
Structure	RC, 7 floors above		
Car Parking	JPY50,000 ~ 55,000 + tax / month		
Bicycle Parking	for 1 space ( Included )		
Music Instrument	-	Pet	Allowed
Facilities	Concierge / Janitor / Delivery box / Elevator / 24h Garbage Drop-off / Newly-built (~7 y/o) / Newly-built (~1 y/o)		

Remarks
Renters Insurance : Required / Pet:additional deposit ( 1 month ) / Pet : a small dog or up to two cats

\*The actual Layout & Size may differ slightly from this floor plans & pictures.



HOUSEREP TOKYO INC.

ハウスレップトーキョー株式会社

#301, 1-4-15, Hiroo, Shibuya-ku, Tokyo 150-0012, Japan

+81 (0)3 6427 5860 inquiry@housserrep-tokyo.com

Transaction Type : Intermediate

Agent Fee : 1 month + tax

Website : www.housserrep-tokyo.com

