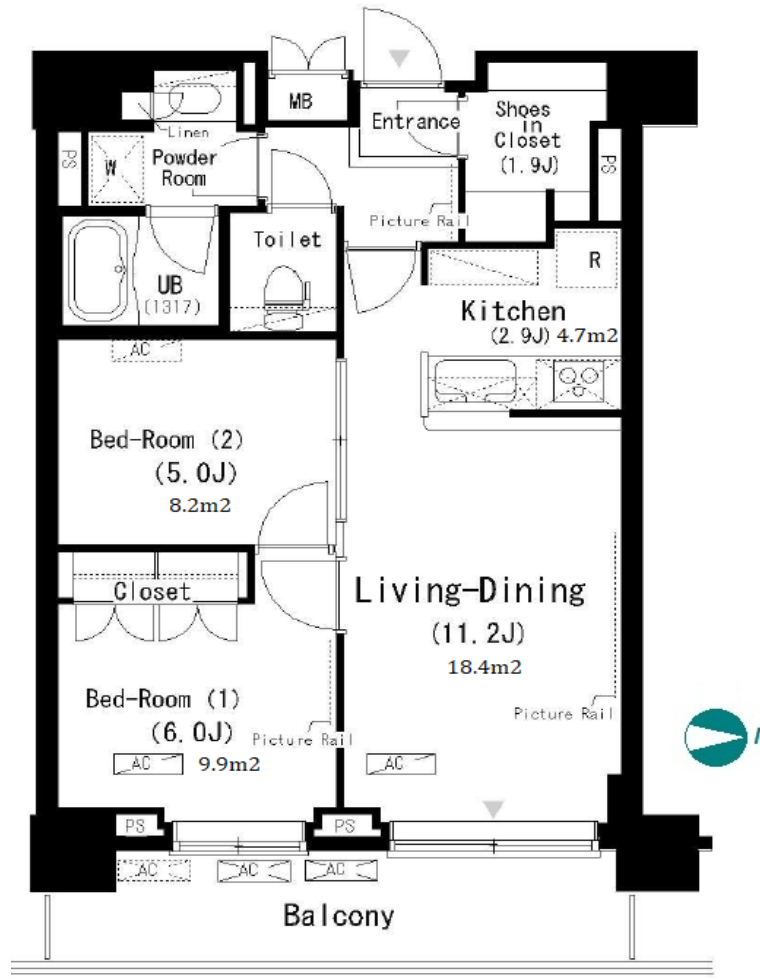


Property Name	PARK AXIS TATSUMI STAGE	Unit No.	TYPE	Access	Tatsumi Station on Yurakucho Line (5 min) Shin-kiba Station on Rinkai Line (15 min)
Address		1116	Apt.		
2-1-56, Tatsumi, Koto-Ku, Tokyo					

Mid-rise apt. in Tastumi near Shinkiba area



\*The actual Layout & Size may differ slightly from this floor plans & pictures.

Lease Conditions	
LAYOUT	2 BR
SIZE	58.55 m <sup>2</sup> /630.22 ft <sup>2</sup>
RENT	JPY 198,000 / month
Management Fee	JPY12,000/month
Deposit	2 months
Key Money	1 month
Lease Term	Standard lease for 24 months
Available	Now
Renewal Fee	1 month
Agent Fee	1 month + tax
Other Info	Key Replacement Fee : JPY15,000 Tax not included / Guarantor Company : TBC / Auto lock / Air-Con / Separated Toilet / Balcony / Penalty Fee for Early Cancellation / Musical Instrument Negotiable / Flooring / Bathroom dryer

Building Information	
Completion	Jan, 2008
Earthquake Resistance	New
Structure	RC, 13 floors above and 1 basement floors
Car Parking	extra charge
Bicycle Parking	TBC
Music Instrument	Negotiable
Pet	Allowed
Facilities	Motorcycle Parking (TBC) / Near Large Parks / Janitor / Delivery box / Elevator / Security

Remarks
Renters Insurance : Required / Bicycle parking : Registration fee: JPY.2,000+tax / Pet:additional deposit ( 1 month ) / Pet : a small dog or up to two cats



HOUSEREP TOKYO INC.

ハウズレップトーキョー株式会社

#301, 1-4-15, Hiroo, Shibuya-ku, Tokyo 150-0012, Japan

+81 (0)3 6427 5860 inquiry@housserrep-tokyo.com

Transaction Type : Intermediate

Agent Fee : 1 month + tax

Website : www.housserrep-tokyo.com

