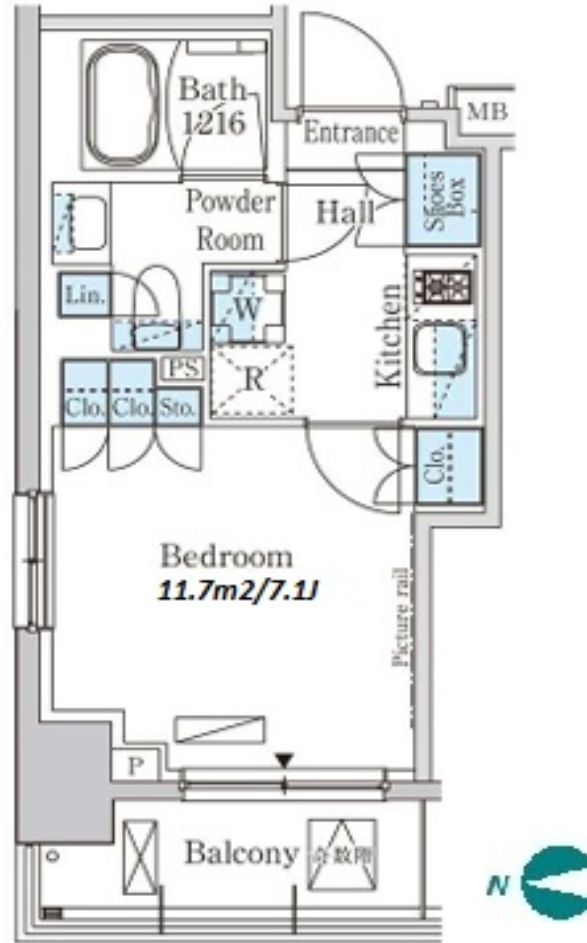


Property Name	PARK AXIS KINSHICHO WEST	Unit No.	TYPE	Access	Kikukawa Station on Toei Shinjuku Line (8 min) Kinshichou Station on JR Chuo-Sobu Line (11 min)
		608	Apt.		
Address	4-4-5, Midori, Sumida-Ku, Tokyo				

Pet friendly Apt. near Sarue Onshi Park & JR Kinshicho station



*The actual Layout & Size may differ slightly from this floor plans & pictures.

Lease Conditions		
LAYOUT	Studio	
SIZE	25.24 m²/271.68 ft²	
RENT	JPY 106,000 / month	
Management Fee	JPY20,000/month	
Deposit	1 month	Key Money -
Lease Term	Standard lease for 24 months	
Available	End, Jul, 2024	
Renewal Fee	1 month	
Agent Fee	1 month + tax	
Other Info	Key Replacement Fee : JPY20,000 Tax not included / Guarantor Company : TBC / No Key Money / Auto lock / Air-Con / Separated Toilet / Balcony / Internet (Extra Charge) / Penalty Fee for Early Cancellation / Musical Instrument Negotiable / CS/CATV / Flooring / Bathroom dryer	

Building Information			
Completion	Mar, 2019	Earthquake Resistance	New
Structure	RC, 9 floors above		
Car Parking	TBC		
Bicycle Parking	TBC		
Music Instrument	Negotiable	Pet	Allowed
Facilities	Motorcycle Parking (TBC) / Near Large Parks / Janitor / Delivery box / Elevator		

Remarks
Renters Insurance : Required / Pet:additional deposit (1 month) / Pet : a small dog or a cat



HOUSEREP TOKYO INC.

ハウスレップトーキョー株式会社

#301, 1-4-15, Hiroo, Shibuya-ku, Tokyo 150-0012, Japan

+81 (0)3 6427 5860 inquiry@housserrep-tokyo.com

Transaction Type : Intermediate

Agent Fee : 1 month + tax

Website : www.housserrep-tokyo.com

