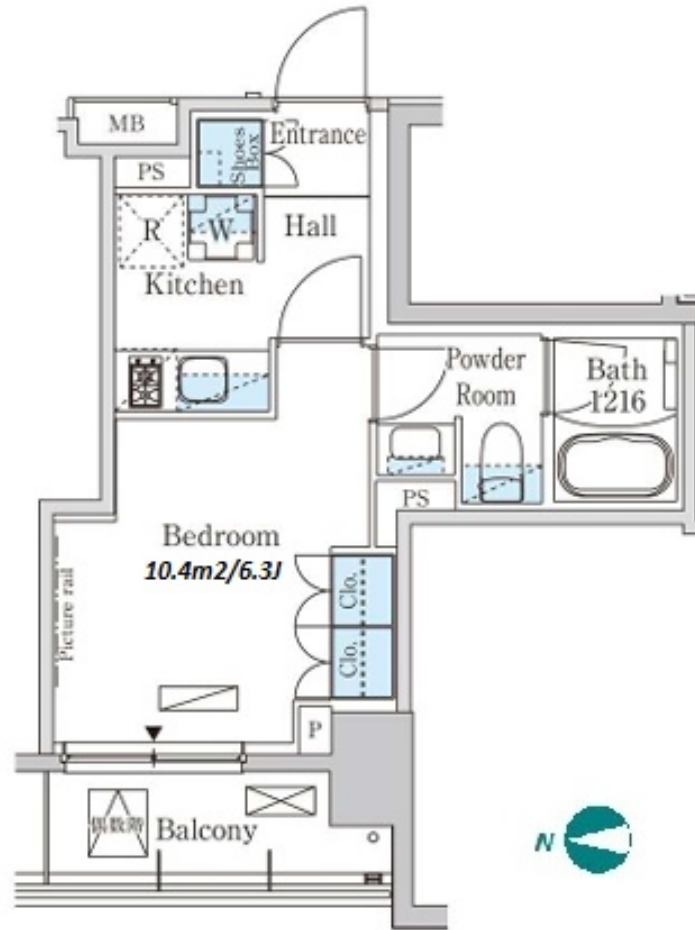


Property Name	PARK AXIS KINSHICHO WEST	Unit No.	TYPE	Access	Kikukawa Station on Toei Shinjuku Line (8 min) Kinshichou Station on JR Chuo-Sobu Line (11 min)
		210	Apt.		
Address	4-4-5, Midori, Sumida-Ku, Tokyo				

Pet friendly Apt. near Sarue Onshi Park & JR Kinshicho station



\*The actual Layout & Size may differ slightly from this floor plans & pictures.

Lease Conditions	
LAYOUT	Studio
SIZE	25.36 m <sup>2</sup> /272.97 ft <sup>2</sup>
RENT	JPY 100,500 / month
Management Fee	JPY20,000/month
Deposit	1 month
Key Money	-
Lease Term	Standard lease for 24 months
Available	Now
Renewal Fee	1 month
Agent Fee	1 month + tax
Other Info	Key Replacement Fee : JPY20,000 Tax not included / Guarantor Company : TBC / No Key Money / Free rent / Auto lock / Air-Con / Separated Toilet / Balcony / Internet (Extra Charge) / Penalty Fee for Early Cancellation / Musical Instrument Negotiable / CS/CATV / Flooring / Bathroom dryer

Building Information			
Completion	Mar, 2019	Earthquake Resistance	New
Structure	RC, 9 floors above		
Car Parking	TBC		
Bicycle Parking	TBC		
Music Instrument	Negotiable	Pet	Allowed
Facilities	Motorcycle Parking (TBC) / Near Large Parks / Janitor / Delivery box / Elevator		

Remarks
Renters Insurance : Required / Pet:additional deposit ( 1 month ) / Pet : a small dog or a cat



HOUSEREP TOKYO INC.

ハウズレップトーキョー株式会社

#301, 1-4-15, Hiroo, Shibuya-ku, Tokyo 150-0012, Japan

+81 (0)3 6427 5860 inquiry@housserep-tokyo.com

Transaction Type : Intermediate

Agent Fee : 1 month + tax

Website : www.housserep-tokyo.com

