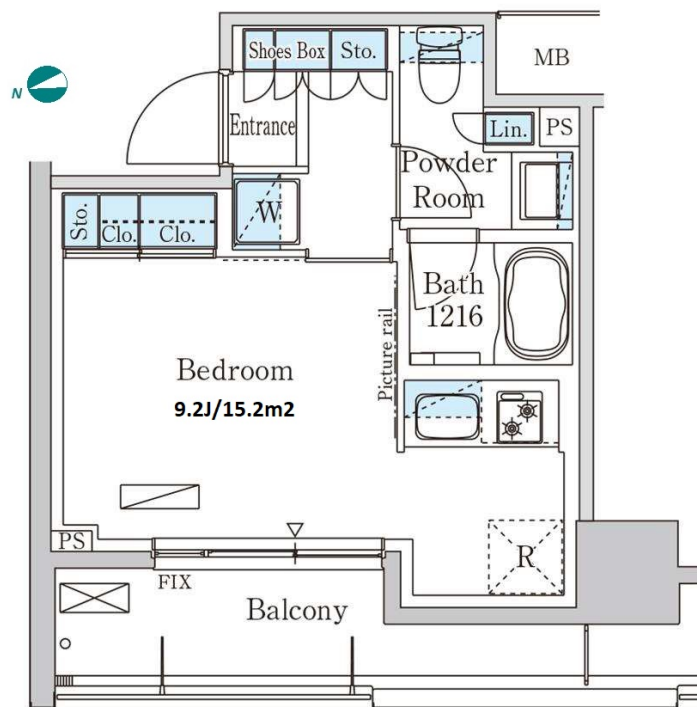


Property Name	PARK AXIS HONJOAZUMABASHI	Unit No.	TYPE	Access	Honjoadumabashi Station on Toei Asakusa Line (5 min)
		1001	Apt.		
Address	1-10-2, Mukojima, Sumida-Ku, Tokyo				

Mid rise apartment in TOKYO near Honjoazumabashi Sta.



Lease Conditions	
LAYOUT	Studio
SIZE	25.74 m ² /277.06 ft ²
RENT	JPY 110,000 / month
Management Fee	JPY10,000/month
Deposit	2 months
Key Money	-
Lease Term	Standard lease for 24 months
Available	End, Sep, 2024
Renewal Fee	1 month
Agent Fee	1 month + tax
Other Info	Key Replacement Fee : JPY15,000 Tax not included / Guarantor Company : TBC / No Key Money / Free rent / Auto lock / Air-Con / Separated Toilet / Balcony / Internet (Extra Charge) / Penalty Fee for Early Cancellation / Musical Instrument Negotiable / CS/CATV / Flooring / Bathroom dryer

Building Information	
Completion	Dec, 2015
Earthquake Resistance	New
Structure	RC, 11 floors above
Car Parking	N/A
Bicycle Parking	for 1 space (Included)
Music Instrument	Negotiable
Pet	Allowed
Facilities	Janitor / Delivery box / Elevator / Security / Close to Station

Remarks
Renters Insurance : Required / Bicycle parking : One-time sticker fee: JPY2,000+tax / Pet:additional deposit (1 month) / Pet : a small dog or a cat

*The actual Layout & Size may differ slightly from this floor plans & pictures.



HOUSEREP TOKYO INC.

ハウスレップトーキョー株式会社

#301, 1-4-15, Hiroo, Shibuya-ku, Tokyo 150-0012, Japan

+81 (0)3 6427 5860

inquiry@housserep-tokyo.com

Transaction Type : Intermediate

Agent Fee : 1 month + tax

Website : www.housserep-tokyo.com

