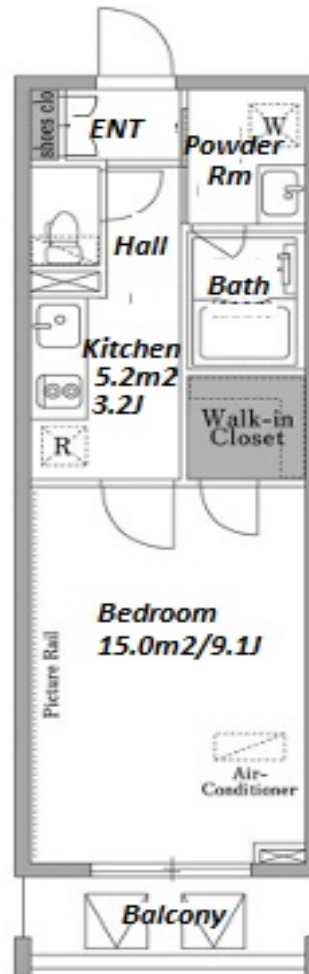
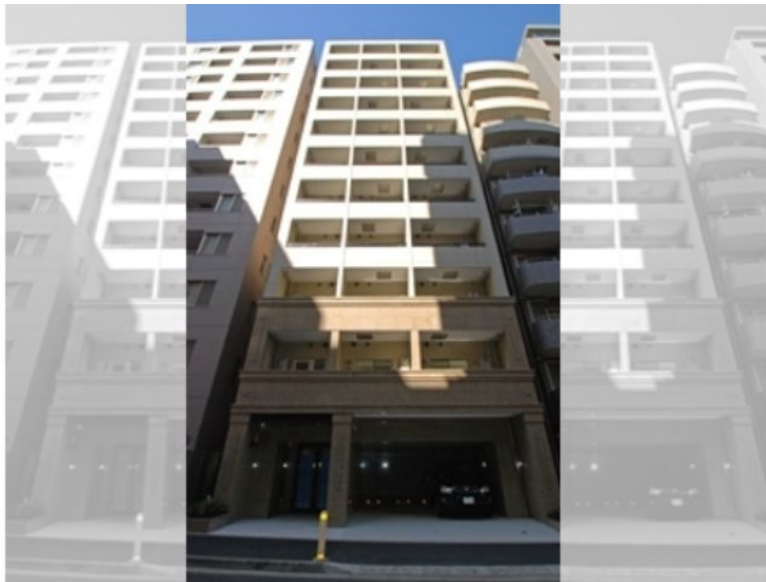


Property Name	PARKWOOD RESIDENCE NIHONBASHI	Unit No.	TYPE	Access	Kodenmachou Station on Hibiya Line (4 min) Bakuroyokoyama Station on Toei Shinjuku Line (4 min) Ninngyouchou Station on Hibiya Line (5 min)
		1005	Apt.		
Address	2-5-10, Nihombashihoridomecho, Chuo-Ku, Tokyo				

Modern Mid Rise Apt. near Kodenmacho & Ningyocho stn.



*The actual Layout & Size may differ slightly from this floor plans & pictures.

Lease Conditions		
LAYOUT	Studio	
SIZE	30.22 m²/325.28 ft²	
RENT	JPY 130,000 / month	
Management Fee	JPY6,000/month	
Deposit	2 months	Key Money 1 month
Lease Term	Standard lease for 24 months	
Available	End, Jul, 2024	
Renewal Fee	1 month	
Agent Fee	1 month + tax	
Other Info	Auto lock / Air-Con / Separated Toilet / Balcony / Flooring / Bathroom dryer / WIC	

Building Information		
Completion	Feb, 2012	Earthquake Resistance New
Structure	RC, 11 floors above	
Car Parking	N/A	
Bicycle Parking	TBC	
Music Instrument	-	Pet N/A
Facilities	Motorcycle Parking (JPY10,000 + tax / month) / Within 20 min to Tokyo station by car / Janitor / Delivery box / Elevator / Security / Close to Station / 24h Garbage Drop-off	

Remarks
Renters Insurance : Required / Key replacement: extra charge / Bicycle parking : resistration fee : JPY8,000+tax



HOUSEREP TOKYO INC.

ハウズレップトーキョー株式会社

#301, 1-4-15, Hiroo, Shibuya-ku, Tokyo 150-0012, Japan

+81 (0)3 6427 5860

inquiry@housserrep-tokyo.com

Transaction Type : Intermediate

Agent Fee : 1 month + tax

Website : www.housserrep-tokyo.com

