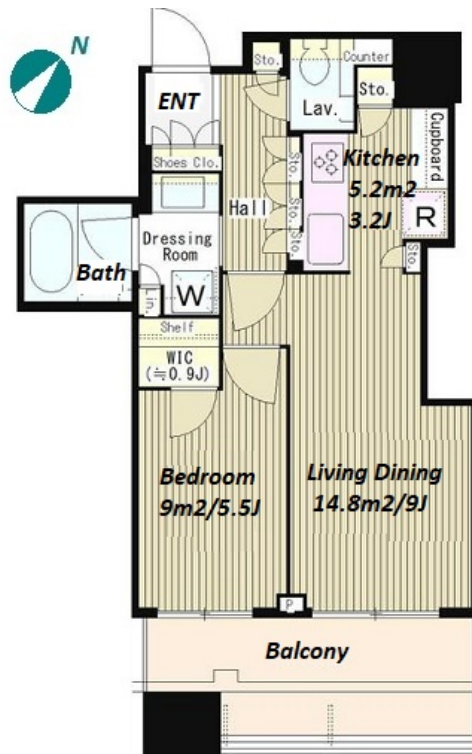


Property Name	CAPITAL GATE PLACE THE TOWER	Unit No.	TYPE	Access	Tsukishima Station on Yurakucho Line (1 min) Tsukishima Station on Oedo Line (1 min)
		2303	Apt.		
Address	1-5-1, Tsukishima, Chuo-Ku, Tokyo				

Modern tower residence directly connected to Tsukishima stn.



Lease Conditions			
LAYOUT	1 BR		
SIZE	45.44 m ² /489.11 ft ²		
RENT	JPY 225,000 / month		
Management Fee	JPY 15,000/month		
Deposit	2 months	Key Money	2 months
Lease Term	Standard lease for 24 months		
Available	Now		
Renewal Fee	1 month		
Agent Fee	1 month + tax		
Other Info	Key Replacement Fee : JPY20,000 Tax not included / Auto lock / Separated Toilet / Balcony / Internet (Extra Charge) / CS/CATV / Flooring / Bathroom dryer		

Building Information			
Completion	Aug, 2015	Earthquake Resistance	New
Structure	RC, 53 floors above and 2 basement floors		
Car Parking	TBC		
Bicycle Parking	TBC		
Music Instrument	-	Pet	-
Facilities	Motorcycle Parking (TBC) / Near Large Parks / Janitor / Delivery box / Elevator		

Remarks
Renters Insurance : Required

*The actual Layout & Size may differ slightly from this floor plans & pictures.



HOUSEREP TOKYO INC.

ハウスレップトーキョー株式会社

#301, 1-4-15, Hiroo, Shibuya-ku, Tokyo 150-0012, Japan

+81 (0)3 6427 5860

inquiry@housserrep-tokyo.com

Transaction Type : Intermediate

Agent Fee : 1 month + tax

Website : www.housserrep-tokyo.com

