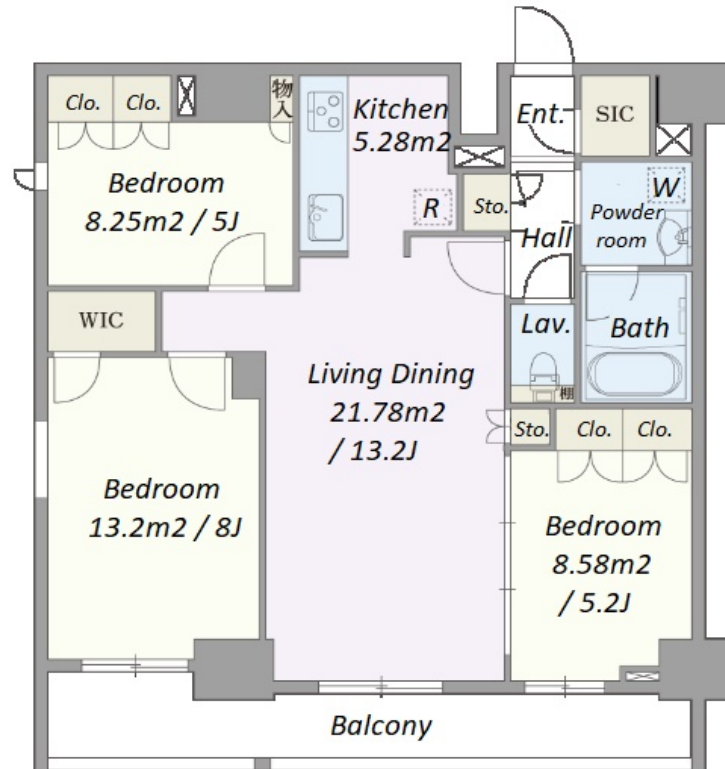


Property Name	ASYL COURT SHIOHAMA CANAL	Unit No.	TYPE	Access	Ecchujima Station on JR Keiyo Line (10 min) Kiba Station on Tozai Line (14 min)
		1303	Apt.		
Address	1-3-20, Shiohama, Koto-Ku, Tokyo				

Stylish Mid Rise Residence in Water Front Shiohama



Lease Conditions	
LAYOUT	3 BR
SIZE	74.61 m²/803.09 ft²
RENT	JPY 310,000 / month
Management Fee	JPY15,000/month
Deposit	2 months
Key Money	1 month
Lease Term	Standard lease for 24 months
Available	Now
Renewal Fee	1 month
Agent Fee	1 month + tax
Other Info	Guarantor Company : TBC / Auto lock / Air-Con / Separated Toilet / Balcony / Flooring / Bathroom dryer / WIC / Corner Unit

Building Information			
Completion	Oct, 2023	Earthquake Resistance	New
Structure	RC, 15 floors above		
Car Parking	JPY30,800/ month		
Bicycle Parking	TBC		
Music Instrument	-	Pet	-
Facilities	Motorcycle Parking (TBC) / Delivery box / 24h Garbage Drop-off / High-rise / Newly-built (~1 y/o)		

*The actual Layout & Size may differ slightly from this floor plans & pictures.



HOUSEREP TOKYO INC.

ハウズレップトーキョー株式会社

#301, 1-4-15, Hiroo, Shibuya-ku, Tokyo 150-0012, Japan

+81 (0)3 6427 5860

inquiry@housserrep-tokyo.com

Transaction Type : Intermediate

Agent Fee : 1 month + tax

Website : www.housserrep-tokyo.com



Remarks
Renters Insurance : Required