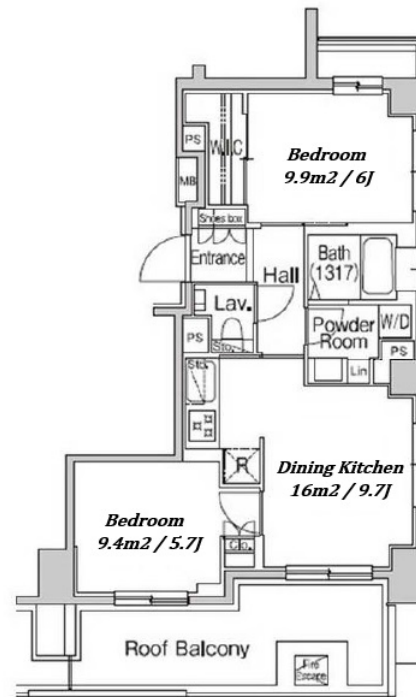


Property Name	COMFORIA ICHIGAYA	Unit No.	TYPE	Access	Ushigomeyanagichou Station on Oedo Line (5 min) Akebonobashi Station on Toei Shinjuku Line (9 min)
	YAKUOJI	405	Apt.		
Address	74, Ichigayayakuojimachi, Shinjuku-Ku, Tokyo				



Lease Conditions

LAYOUT	2 BR	
SIZE	51.94 m²/559.07 ft²	
RENT	JPY 226,000 / month	
Management Fee	JPY12,000/month	
Deposit	1 month	Key Money -
Lease Term	Standard lease for 24 months	
Available	Now	
Renewal Fee	1 month	
Agent Fee	1 month + tax	
Other Info	Key Replacement Fee : JPY20,000 Tax not included / No Key Money / Free rent / Auto lock / Air-Con / Separated Toilet / Balcony / Internet (Extra Charge) / Penalty Fee for Early Cancellation / Flooring / Bathroom dryer / Corner Unit	

Building Information

Completion	Nov, 2006	Earthquake Resistance	New
Structure	RC, 5 floors above		
Car Parking	N/A		
Bicycle Parking	for 1 space (Included)		
Music Instrument	-	Pet	Negotiable
Facilities	Within 20 min to Tokyo station by car / Near Large Parks / Delivery box / Elevator		

Remarks

Renters Insurance : Required

*The actual Layout & Size may differ slightly from this floor plans & pictures.



HOUSEREP TOKYO INC.

ハウスレップトーキョー株式会社

#301, 1-4-15, Hiroo, Shibuya-ku, Tokyo 150-0012, Japan

+81 (0)3 6427 5860

inquiry@housserrep-tokyo.com

Transaction Type : Intermediate

Agent Fee : 1 month + tax

Website : www.housserrep-tokyo.com

