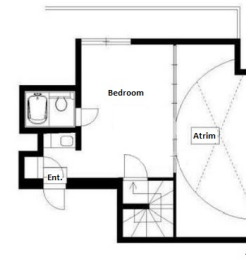
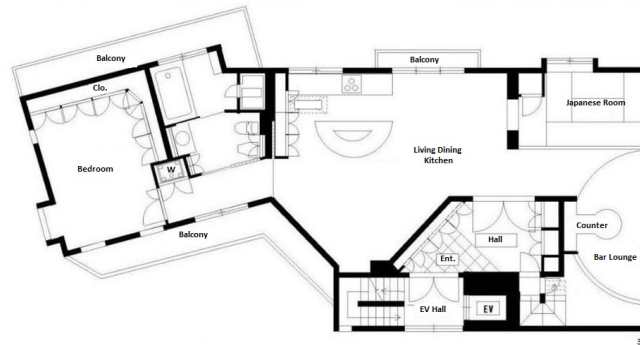


Property Name	FAMILIA WADA	Unit No.	TYPE	Access	Kagurazaka Station on Tozai Line (6 min) Ushigomekagurazaka Station on Oedo Line (9 min) Edogawabashi Station on Yurakucho Line (12 min)
		3F	Apt.		
Address	20-1, Yaraicho, Shinjuku-Ku, Tokyo				

Low rise apartment in TOKYO near Kagurazaka Sta.



Lease Conditions			
LAYOUT	3 BR		
SIZE	172.88 m ² /1860.86 ft ²		
RENT	JPY 800,000 / month		
Management Fee	-		
Deposit	3 months	Key Money	1 month
Lease Term	Fixed term lease for 36 months		
Available	Ask for Details		
Renewal Fee	-		
Agent Fee	1 month + tax		
Other Info	Air-Con / Balcony / Bathroom dryer		

Building Information			
Completion	Sep, 1996	Earthquake Resistance	New
Structure	RC, 4 floors above and 2 basement floors		
Car Parking	JPY50,000 + tax / month		
Bicycle Parking	-		
Music Instrument	-	Pet	-
Facilities	French Community / Elevator / Security / Low-rise		

Remarks
Fixed term lease : Re-signing fee: 1 month new rent; Re-signing handling fee: 0.25 month new rent / Renters Insurance : Required

*The actual Layout & Size may differ slightly from this floor plans & pictures.



HOUSEREP TOKYO INC.

ハウスレップトーキョー株式会社

#301, 1-4-15, Hiroo, Shibuya-ku, Tokyo 150-0012, Japan

+81 (0)3 6427 5860

inquiry@housserep-tokyo.com

Transaction Type : Intermediate

Agent Fee : 1 month + tax

Website : www.housserep-tokyo.com

