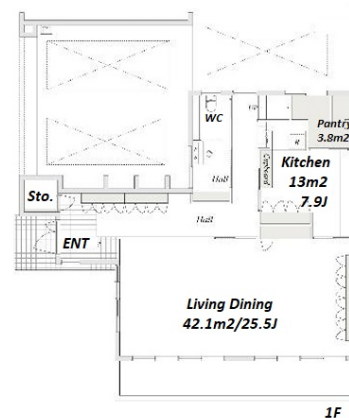
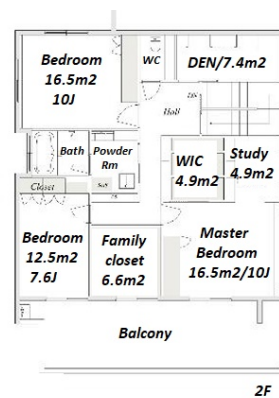
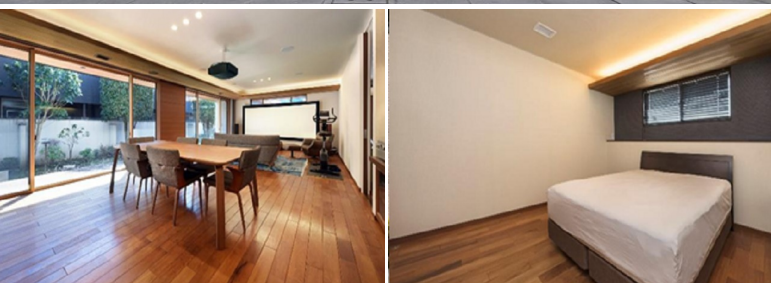


Property Name	CHIHAYA GARAGE RESIDENCE	Unit No.	TYPE	Access	Sennkawa Station on Fukutoshin Line (9 min)
			House		
Address	2-44-8, Chihaya, Toshima-Ku, Tokyo				



## Lease Conditions

LAYOUT	3 BR+F+Den		
SIZE	207.11 m <sup>2</sup> /2229.31 ft <sup>2</sup>		
RENT	JPY 1,200,000 / month		
Management Fee	-		
Deposit	2 months	Key Money	1 month
Lease Term	Standard lease for 24 months		
Available	Negotiable		
Renewal Fee	-		
Agent Fee	1 month + tax		
Other Info	Balcony / Loft/Maisonnette / WIC / 2 Toilets		

## Building Information

Completion	May, 2016	Earthquake Resistance	New
Structure	Wooden, 2 floors above		
Car Parking	for 5 spaces ( Included )		
Bicycle Parking	-		
Music Instrument	-	Pet	Allowed
Facilities	House		

## Remarks

Renters Insurance : Required / Pet:additional deposit ( 1 month )

\*The actual Layout & Size may differ slightly from this floor plans & pictures.



HOUSEREP TOKYO INC.

ハウスレップトーキョー株式会社

#301, 1-4-15, Hiroo, Shibuya-ku, Tokyo 150-0012, Japan

+81 (0)3 6427 5860

inquiry@housserrep-tokyo.com

Transaction Type : Intermediate

Agent Fee : 1 month + tax

Website : www.housserrep-tokyo.com

