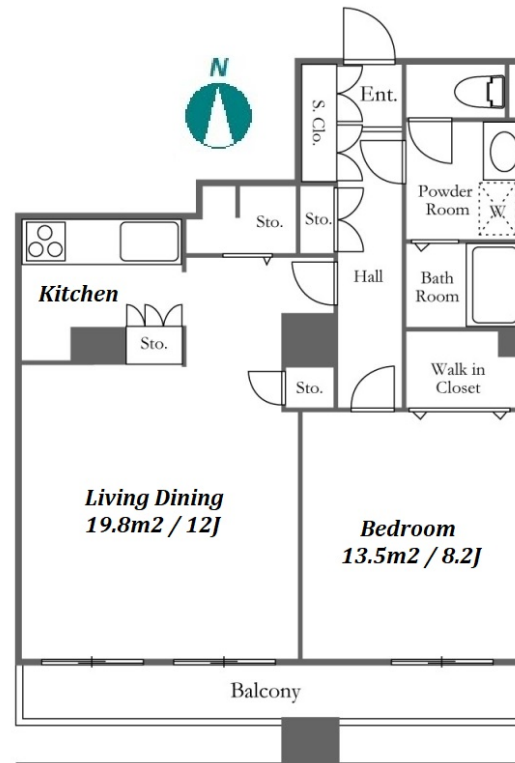


Property Name	RIVER CITY 21 EAST TOWERS 10	Unit No.	TYPE	Access	Tsukishima Station on Oedo Line (5 min) Tsukishima Station on Yurakucho Line (7 min) Hacchoubori Station on Hibiya Line (13 min)
		2508	Apt.		
Address	2-2-10, Tsukuda, Chuo-Ku, Tokyo				

## Renovated Waterfront Apt. in Tsukishima, Tokyo Bay Area



Lease Conditions	
LAYOUT	1 BR
SIZE	63.88 m <sup>2</sup> /687.59 ft <sup>2</sup>
RENT	JPY 239,000 / month
Management Fee	JPY10,000/month
Deposit	2 months
Key Money	-
Lease Term	Standard lease for 24 months
Available	Now
Renewal Fee	1 month
Agent Fee	1 month + tax
Other Info	Key Replacement Fee : JPY15,000 Tax not included / Guarantor Company : TBC / No Key Money / Auto lock / Renovated / Air-Con / Separated Toilet / Balcony / Internet (Extra Charge) / Penalty Fee for Early Cancellation / Nice Views / Flooring / IH Stoves / Bathroom dryer / WIC / 2 Car Parks

Building Information		
Completion	Mar, 1991	Earthquake Resistance New
Structure	SRC, 37 floors above and 2 basement floors	
Car Parking	JPY30,000 + tax / month	
Bicycle Parking	TBC	
Music Instrument	-	Pet N/A
Facilities	Motorcycle Parking (TBC) / Trunk Room (( Included )) / Within 20 min to Tokyo station by car / Near Large Parks / Janitor / Delivery box / Elevator / High-rise	

Remarks
Renters Insurance : Required / Parking : 3 months deposit

\*The actual Layout & Size may differ slightly from this floor plans & pictures.



# HOUSEREP TOKYO INC.

ハウスレップトーキョー株式会社

#301, 1-4-15, Hiroo, Shibuya-ku, Tokyo 150-0012, Japan

+81 (0)3 6427 5860

inquiry@housserrep-tokyo.com

Transaction Type : Intermediate

Agent Fee : 1 month + tax

Website : www.housserrep-tokyo.com

