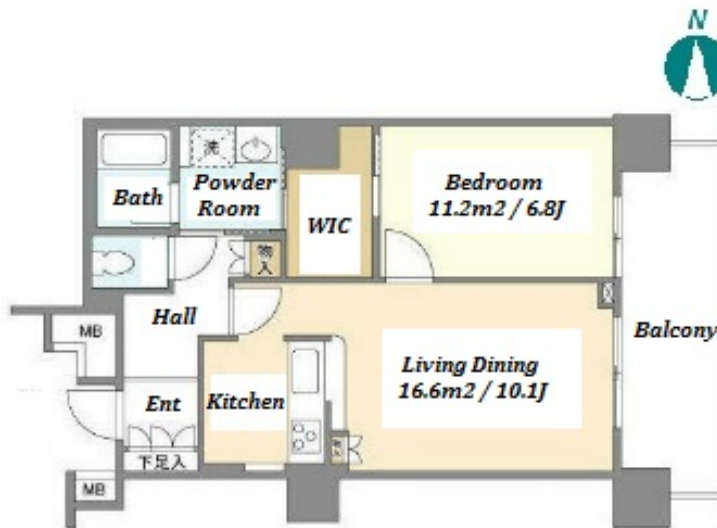


Property Name	TOYOSU CIEL TOWER	Unit No.	TYPE	Access	Toyosu Station on Yurakucho Line (1 min) Toyosu Station on (1 min)
		1316	Apt.		
Address	5-5-1, Toyosu, Koto-Ku, Tokyo				

High-rise condominium in Tokyo bay area



Lease Conditions	
LAYOUT	1 BR
SIZE	55.87 m²/601.37 ft²
RENT	JPY 206,000 / month
Management Fee	JPY10,000/month
Deposit	1 month
Key Money	-
Lease Term	Standard lease for 24 months
Available	End, Jun, 2024
Renewal Fee	1 month
Agent Fee	1 month + tax
Other Info	Key Replacement Fee : JPY30,000 Tax not included / No Key Money / Auto lock / Air-Con / Separated Toilet / Balcony / Internet (Extra Charge) / Penalty Fee for Early Cancellation / Flooring / Floor Heating / Bathroom dryer / WIC

Building Information	
Completion	Sep, 2006
Earthquake Resistance	New
Structure	RC, 40 floors above and 1 basement floors
Car Parking	TBC
Bicycle Parking	extra charge
Music Instrument	-
Pet	-
Facilities	Janitor / Delivery box / Elevator

Remarks
Renters Insurance : Required

\*The actual Layout & Size may differ slightly from this floor plans & pictures.



HOUSEREP TOKYO INC.

ハウスレップトーキョー株式会社

#301, 1-4-15, Hiroo, Shibuya-ku, Tokyo 150-0012, Japan

+81 (0)3 6427 5860

inquiry@housserrep-tokyo.com

Transaction Type : Intermediate

Agent Fee : 1 month + tax

Website : www.housserrep-tokyo.com

