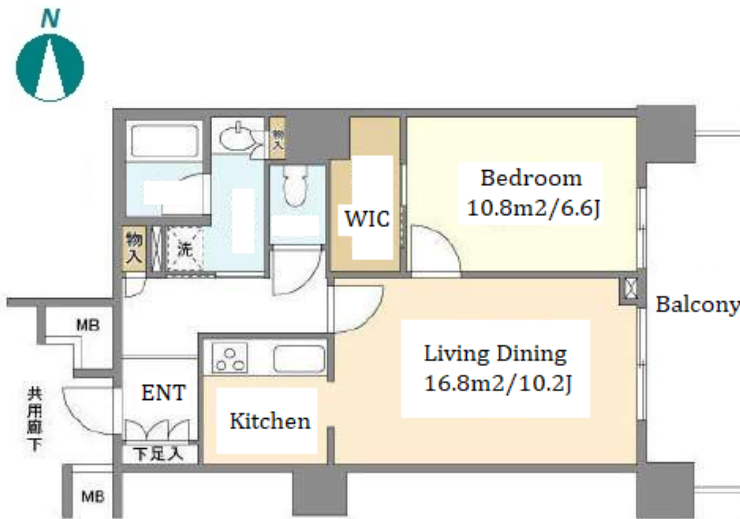


Property Name	TOYOSU CIEL TOWER	Unit No.	TYPE	Access	Toyosu Station on Yurakucho Line (1 min) Toyosu Station on (1 min)
		3112	Apt.		
Address	5-5-1, Toyosu, Koto-Ku, Tokyo				

High-rise condominium in Tokyo bay area



Lease Conditions			
LAYOUT	1 BR		
SIZE	54.14 m ² /582.75 ft ²		
RENT	JPY 240,000 / month		
Management Fee	JPY10,000/month		
Deposit	1 month	Key Money	1 month
Lease Term	Standard lease for 24 months		
Available	End, Jul, 2024		
Renewal Fee	1 month		
Agent Fee	1 month + tax		
Other Info	Key Replacement Fee : JPY30,000 Tax not included / Auto lock / Air-Con / Separated Toilet / Balcony / Internet (Extra Charge) / Nice Views / Flooring / Floor Heating / Bathroom dryer / WIC		

Building Information			
Completion	Sep, 2006	Earthquake Resistance	New
Structure	RC, 40 floors above and 1 basement floors		
Car Parking	TBC		
Bicycle Parking	extra charge		
Music Instrument	-	Pet	-
Facilities	Motorcycle Parking (TBC) / Janitor / Delivery box / Elevator		

Remarks
Renters Insurance : Required

*The actual Layout & Size may differ slightly from this floor plans & pictures.



HOUSEREP TOKYO INC.

ハウズレップトーキョー株式会社

#301, 1-4-15, Hiroo, Shibuya-ku, Tokyo 150-0012, Japan

+81 (0)3 6427 5860

inquiry@housserrep-tokyo.com

Transaction Type : Intermediate

Agent Fee : 1 month + tax

Website : www.housserrep-tokyo.com

