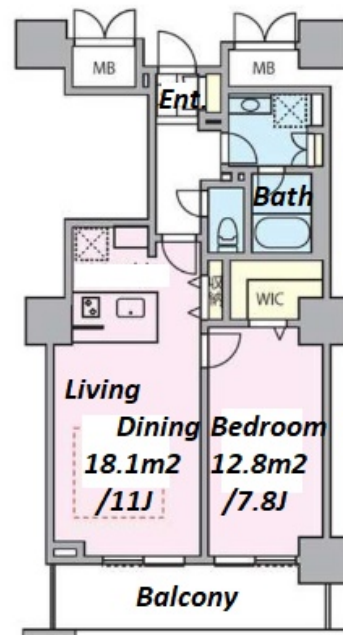
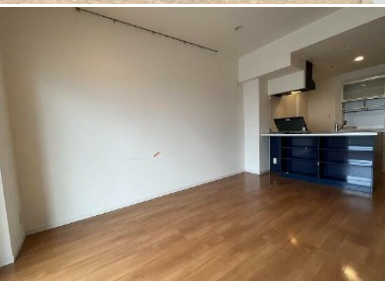


Property Name	ROYAL PARKS TOWER	Unit No.	TYPE	Access	Minamisennju Station on JR Joban Line (5 min) Minamisennju Station on Hibiya Line (5 min) Sennjuohashi Station on Keisei Main Line (19 min)
	MINAMISENJU	1702	Apt.		
Address	4-7-3, Minamisenju, Arakawa-Ku, Tokyo				

High Rise Tower Residence in Minamisenju



Lease Conditions		
LAYOUT	1 BR	
SIZE	51.41 m ² /553.37 ft ²	
RENT	JPY 209,000 / month	
Management Fee	JPY13,000/month	
Deposit	1 month	Key Money 1 month
Lease Term	Fixed term lease for 36 months	
Available	Now	
Renewal Fee	-	
Agent Fee	1 month + tax	
Other Info	Guarantor Company : TBC / Auto lock / Air-Con / Separated Toilet / Balcony / Floor Heating / Bathroom dryer / WIC	

Building Information		
Completion	May, 2008	Earthquake Resistance New
Structure	RC, 39 floors above and 1 basement floors	
Car Parking	JPY19,950 + tax / month	
Bicycle Parking	N/A	
Music Instrument	-	Pet Negotiable
Facilities	Motorcycle Parking (TBC) / Front desk / Delivery box	

Remarks
Renters Insurance : Required

*The actual Layout & Size may differ slightly from this floor plans & pictures.



HOUSEREP TOKYO INC.

ハウスレップトーキョー株式会社

#301, 1-4-15, Hiroo, Shibuya-ku, Tokyo 150-0012, Japan

+81 (0)3 6427 5860

inquiry@housserrep-tokyo.com

Transaction Type : Intermediate

Agent Fee : 1 month + tax

Website : www.housserrep-tokyo.com

