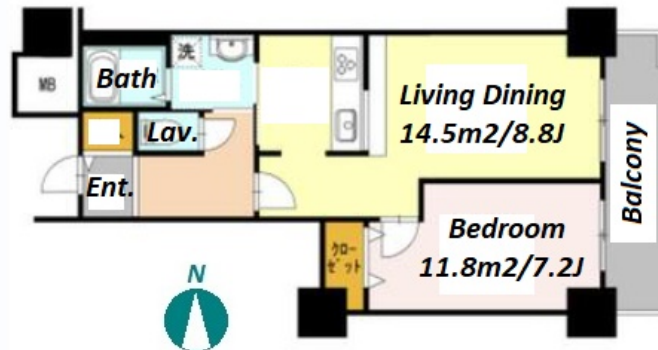


Property Name	SHINAGAWA SEA SIDE VIEW TOWER	Unit No.	TYPE	Access	Shinagawashi-saido Station on Rinkai Line (1 min) Aomonoyokochou Station on Keikyu Line (10 min)
		I-2106	Apt.		
Address	4-12-9, Higashishinagawa, Shinagawa-Ku, Tokyo				

Stylish High Rise Apartment in Shinagawa /Tokyo Bay area



Lease Conditions		
LAYOUT	1 BR	
SIZE	53.4 m²/574.79 ft²	
RENT	JPY 193,000 / month	
Management Fee	JPY12,000/month	
Deposit	-	Key Money 2 months
Lease Term	Standard lease for 24 months	
Available	Mid, Jul, 2024	
Renewal Fee	1 month	
Agent Fee	1 month + tax	
Other Info	Guarantor Company : TBC / Auto lock / Air-Con / Separated Toilet / Balcony / Internet Included / Internet (Extra Charge) / Flooring / Floor Heating / Bathroom dryer / WIC	

Building Information		
Completion	Aug, 2003	Earthquake Resistance New
Structure	RC, 30 floors above	
Car Parking	JPY20,000 ~ 36,000 + tax / month	
Bicycle Parking	TBC	
Music Instrument	-	Pet -
Facilities	Motorcycle Parking (TBC) / Delivery box / Elevator	

Remarks
Renters Insurance : Required / *Room Cleaning Fee : 108,068yen / *Air-Con : only 1 unit

*The actual Layout & Size may differ slightly from this floor plans & pictures.



HOUSEREP TOKYO INC.

ハウスレップトーキョー株式会社

#301, 1-4-15, Hiroo, Shibuya-ku, Tokyo 150-0012, Japan

+81 (0)3 6427 5860

inquiry@housserrep-tokyo.com

Transaction Type : Intermediate

Agent Fee : 1 month + tax

Website : www.housserrep-tokyo.com

