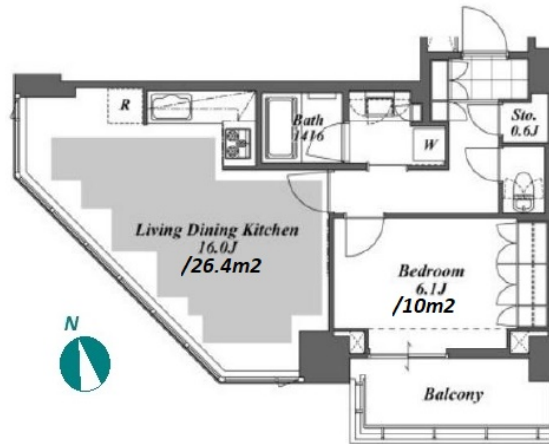
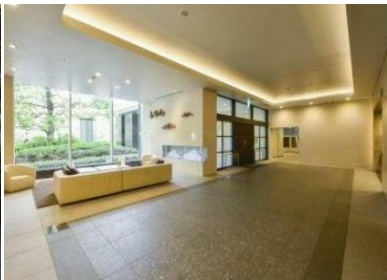


Property Name	BRILLIA IST TOWER KACHIDOKI	Unit No.	TYPE	Access	Kachidoki Station on Oedo Line (3 min) Tsukishima Station on Yurakucho Line (10 min) Tsukiji Station on Hibiya Line (12 min)
		14F	Apt.		
Address	1-3-1, Kachidoki, Chuo-Ku, Tokyo				



Lease Conditions	
LAYOUT	1 BR
SIZE	53.71 m ² /578.12 ft ²
RENT	JPY 223,000 / month
Management Fee	JPY15,000/month
Deposit	2 months
Key Money	1 month
Lease Term	Fixed term lease for 24 months
Available	26, Jul, 2024
Renewal Fee	-
Agent Fee	1 month + tax
Other Info	Key Replacement Fee : JPY15,000 Tax not included / Auto lock / Air-Con / Separated Toilet / Balcony / Internet Included / Penalty Fee for Early Cancellation / Flooring / Floor Heating / Bathroom dryer

Building Information			
Completion	Oct, 2011	Earthquake Resistance	New
Structure	RC, 45 floors above and 2 basement floors		
Car Parking	JPY32,000 + tax / month		
Bicycle Parking	-		
Music Instrument	-	Pet	N/A
Facilities	Front desk / Concierge / Delivery box / Elevator / Security / Close to Station / Fitness / Gym / High-rise		

Remarks
Renters Insurance : Required

*The actual Layout & Size may differ slightly from this floor plans & pictures.



HOUSEREP TOKYO INC.

ハウスレップトーキョー株式会社

#301, 1-4-15, Hiroo, Shibuya-ku, Tokyo 150-0012, Japan

+81 (0)3 6427 5860

inquiry@housserep-tokyo.com

Transaction Type : Intermediate

Agent Fee : 1 month + tax

Website : www.housserep-tokyo.com

