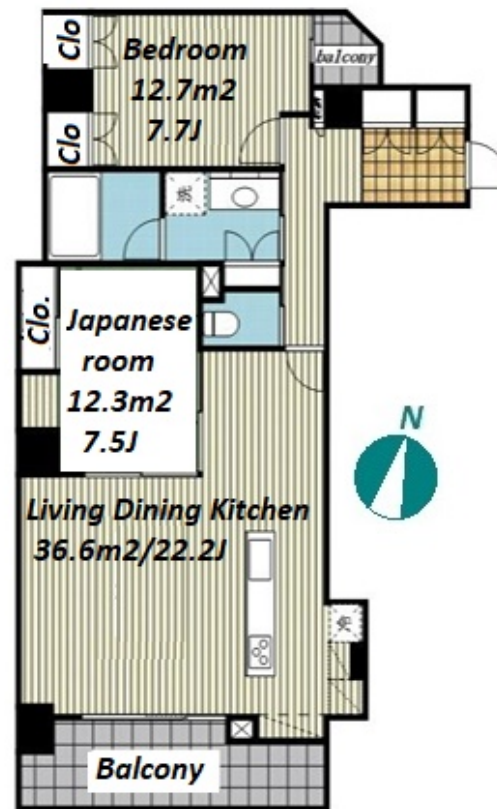
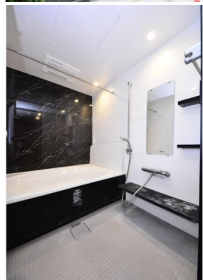
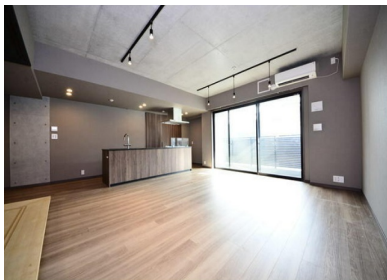


Property Name	GRAN EBISU	Unit No.	TYPE	Access	Ebisu Station on JR Yamanote Line (4 min) Daikanyama Station on Toyoko Line (8 min) Nakameguro Station on Hibiya Line (12 min)
		301	Apt.		
Address	3-1-8, Ebisuminami, Shibuya-Ku, Tokyo				



Lease Conditions	
LAYOUT	2 BR
SIZE	86.55 m²/931.61 ft²
RENT	JPY 620,000 / month
Management Fee	JPY20,000/month
Deposit	2 months
Key Money	1 month
Lease Term	Fixed term lease for 36 months
Available	Now
Renewal Fee	1 month
Agent Fee	1 month + tax
Other Info	Auto lock / Air-Con / Separated Toilet / Balcony / Internet (Extra Charge) / Flooring / Bathroom dryer / Corner Unit

Building Information		
Completion		Earthquake Resistance New
Structure	RC, 3 floors above and 4 basement floors	
Car Parking	-	
Bicycle Parking	extra charge	
Music Instrument	-	Pet
Facilities	Designer's / Elevator / Security / Close to Station / Low-rise / Newly-built (~7 y/o)	

Remarks
Fixed term lease : Re-contract fee : 1 month / Renters Insurance : Required / Pet:additional deposit (1 month) + depreciation fee (1 month)

*The actual Layout & Size may differ slightly from this floor plans & pictures.



HOUSEREP TOKYO INC.

ハウズレップトーキョー株式会社

#301, 1-4-15, Hiroo, Shibuya-ku, Tokyo 150-0012, Japan

+81 (0)3 6427 5860

inquiry@housserep-tokyo.com

Transaction Type : Intermediate

Agent Fee : 1 month + tax

Website : www.housserep-tokyo.com

