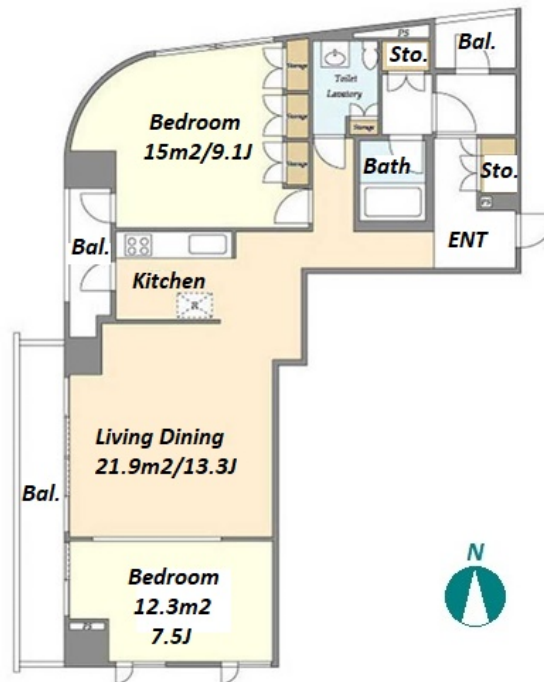


Property Name	CASA EREMITAGGIO	Unit No.	TYPE	Access	Toritsudaigaku Station on Toyoko Line (8 min) Jiyuugaoka Station on Toyoko Line (13 min)
		501	Apt.		
Address	1-14-15, Nakane, Meguro-Ku, Tokyo				



Lease Conditions			
LAYOUT	2 BR		
SIZE	84.56 m²/910.19 ft²		
RENT	JPY 378,000 / month		
Management Fee	JPY12,000/month		
Deposit	2 months	Key Money	1 month
Lease Term	Standard lease for 24 months		
Available	Now		
Renewal Fee	1 month		
Agent Fee	1 month + tax		
Other Info	Key Replacement Fee : JPY20,000 Tax not included / Guarantor Company : TBC / Auto lock / Air-Con / Separated Toilet / Balcony / Internet (Extra Charge)		

Building Information			
Completion	Dec, 2003	Earthquake Resistance	New
Structure	RC, 9 floors above		
Car Parking	JPY36,000 + tax / month		
Bicycle Parking	(Included)		
Music Instrument	-	Pet	Allowed
Facilities	Motorcycle Parking (extra charge) / Janitor / Delivery box / Elevator / Security		

Remarks	
Renters Insurance : Required / Pet:additional deposit (1 month) + depreciation fee (1 month)	

*The actual Layout & Size may differ slightly from this floor plans & pictures.



HOUSEREP TOKYO INC.

ハウズレップトーキョー株式会社

#301, 1-4-15, Hiroo, Shibuya-ku, Tokyo 150-0012, Japan

+81 (0)3 6427 5860 inquiry@housserrep-tokyo.com

Transaction Type : Intermediate

Agent Fee : 1 month + tax

Website : www.housserrep-tokyo.com

