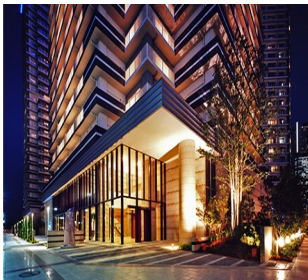


Property Name	PACIFIC ROYAL COURT M.M. - URBAN	Unit No.	TYPE	Access	Shinntakashima Station on Minatomirai Line (7 min) Minatomirai Station on Minatomirai Line (8 min) Yokohama Station on JR Tokaido Line (15 min)
		1606	Apt.		
Address	5-3-3, Minatomirai, Nishi-Ku, Yokohama-Shi, Kanagawa				

Luxury Tower Residence w/Amenities in Minato Mirai, Yokohama



Lease Conditions		
LAYOUT	1 BR	
SIZE	55.75 m ² /600.08 ft ²	
RENT	JPY 195,000 / month	
Management Fee	JPY 18,000/month	
Deposit	2 months	Key Money 1 month
Lease Term	Fixed term lease for 24 months	
Available	End, Jul, 2024	
Renewal Fee	-	
Agent Fee	1 month + tax	
Other Info	Guarantor Company : TBC / Auto lock / Air-Con / Separated Toilet / Balcony / Penalty Fee for Early Cancellation / Flooring / Floor Heating / IH Stoves / Bathroom dryer	

Building Information		
Completion	Jul, 2008	Earthquake Resistance New
Structure	RC, 29 floors above and 1 basement floors	
Car Parking	JPY25,000 ~ 27,000 + tax / month	
Bicycle Parking	for 1 space (Included)	
Music Instrument	-	Pet -
Facilities	Motorcycle Parking (JPY5,000 + tax / month) / Gym ((Included)) / Near Large Parks / Front desk / Concierge / Janitor / Delivery box / Elevator / Sky lounge / Security / High-rise	

Remarks
Renters Insurance : Required

*The actual Layout & Size may differ slightly from this floor plans & pictures.



HOUSEREP TOKYO INC.

ハウスレップトーキョー株式会社

#301, 1-4-15, Hiroo, Shibuya-ku, Tokyo 150-0012, Japan

+81 (0)3 6427 5860

inquiry@housserrep-tokyo.com

Transaction Type : Intermediate

Agent Fee : 1 month + tax

Website : www.housserrep-tokyo.com

