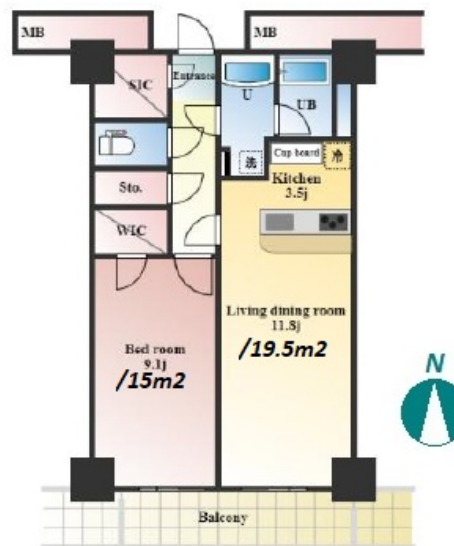
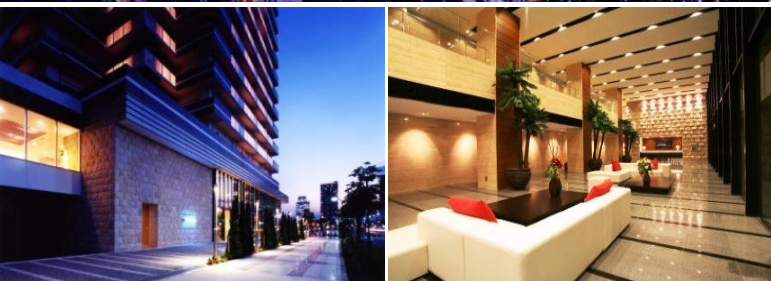


Property Name	PACIFIC ROYAL COURT M.M. - OCEAN TOWER	Unit No.	TYPE	Access	Shinntakashima Station on Minatomirai Line (7 min) Minatomirai Station on Minatomirai Line (8 min) Yokohama Station on JR Tokaido Line (15 min)
		2411	Apt.		
Address	5-3-2, Minatomirai, Nishi-Ku, Yokohama-Shi, Kanagawa				

Luxury Tower Residence w/ Amenities in Minato-Mirai, Yokohama



Lease Conditions		
LAYOUT	1 BR	
SIZE	59.4 m ² /639.37 ft ²	
RENT	JPY 205,000 / month	
Management Fee	JPY 18,000/month	
Deposit	2 months	Key Money 2 months
Lease Term	Fixed term lease for 24 months	
Available	30, Jun, 2024	
Renewal Fee	-	
Agent Fee	1 month + tax	
Other Info	Guarantor Company : TBC / Auto lock / Air-Con / Separated Toilet / Balcony / Penalty Fee for Early Cancellation / Flooring / Floor Heating / IH Stoves / Bathroom dryer	

Building Information		
Completion	Dec, 2007	Earthquake Resistance New
Structure	RC, 29 floors above	
Car Parking	JPY27,000 ~ / month	
Bicycle Parking	(Included)	
Music Instrument	-	Pet -
Facilities	Motorcycle Parking (TBC) / Gym ((Included)) / Near Large Parks / Front desk / Concierge / Delivery box / Elevator	

Remarks
Renters Insurance : Required

*The actual Layout & Size may differ slightly from this floor plans & pictures.



HOUSEREP TOKYO INC.

ハウスレップトーキョー株式会社

#301, 1-4-15, Hiroo, Shibuya-ku, Tokyo 150-0012, Japan

+81 (0)3 6427 5860

inquiry@housserep-tokyo.com

Transaction Type : Intermediate

Agent Fee : 1 month + tax

Website : www.housserep-tokyo.com

