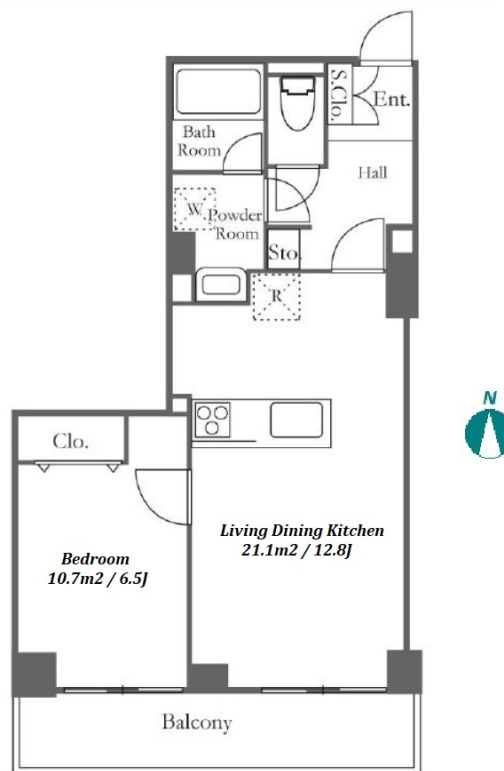
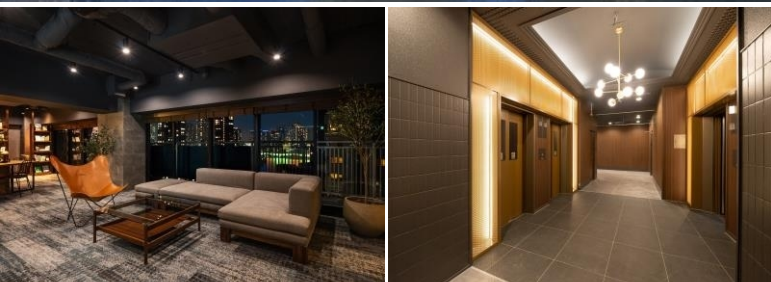


Property Name	RIVER CITY 21 SHINKAWA	Unit No.	TYPE	Access	Hacchoubori Station on Hibiya Line (7 min) Tsukishima Station on Yurakucho Line (13 min) Tsukishima Station on Yurakucho Line (13 min)
		1110	Apt.		
Address	2-27-4, Shinkawa, Chuo-Ku, Tokyo				

High-rise Apt. in Shinkawa, along Sumida River



Lease Conditions	
LAYOUT	1 BR
SIZE	45.96 m ² /494.7 ft ²
RENT	JPY 206,000 / month
Management Fee	JPY10,000/month
Deposit	1 month
Key Money	-
Lease Term	Standard lease for 24 months
Available	Mid, Jun, 2024
Renewal Fee	1 month
Agent Fee	1 month + tax
Other Info	Key Replacement Fee : JPY15,000 Tax not included / No Key Money / Auto lock / Air-Con / Separated Toilet / Balcony / Internet (Extra Charge) / Penalty Fee for Early Cancellation / Nice Views / Flooring / Bathroom dryer / 2 Car Parks

Building Information			
Completion	Jun, 1995	Earthquake Resistance	New
Structure	SRC, 35 floors above and 4 basement floors		
Car Parking	for 1 space JPY35,800 + tax / month		
Bicycle Parking	TBC		
Music Instrument	-	Pet	-
Facilities	Motorcycle Parking (TBC) / Trunk Room (JPY20,000 + tax / month) / Within 20 min to Tokyo station by car / Near Large Parks / Janitor / Delivery box / Elevator / Security / High-rise		

Remarks
Renters Insurance : Required / Parking : 3 months deposit

*The actual Layout & Size may differ slightly from this floor plans & pictures.



HOUSEREP TOKYO INC.

ハウスレップトーキョー株式会社

#301, 1-4-15, Hiroo, Shibuya-ku, Tokyo 150-0012, Japan

+81 (0)3 6427 5860

inquiry@housserep-tokyo.com

Transaction Type : Intermediate

Agent Fee : 1 month + tax

Website : www.housserep-tokyo.com

