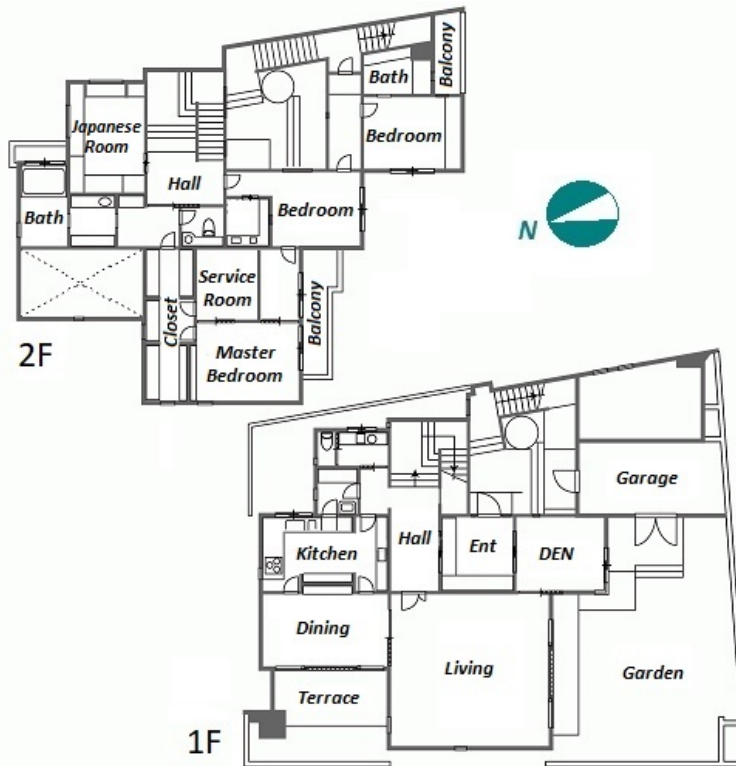
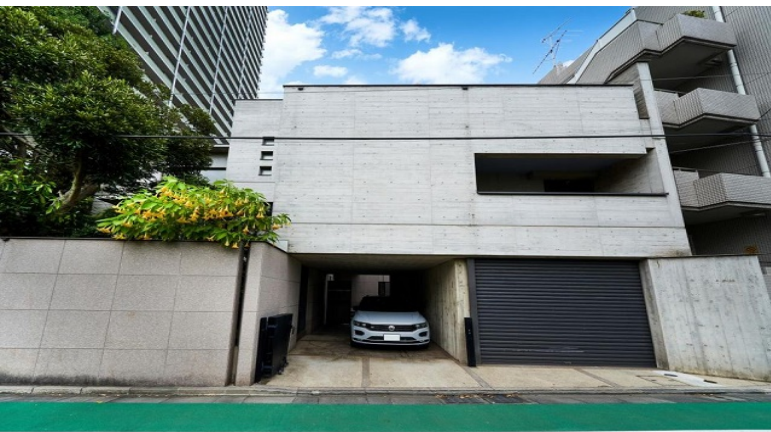


Property Name	NISHIGOTANDA 36 HOUSE	Unit No.	TYPE	Access	Gotanda Station on JR Yamanote Line (5 min) Gotanda Station on Toei Asakusa Line (5 min)
			House		
Address	3-6-33, Nishigotanda, Shinagawa-Ku, Tokyo				

Over 335 sqm House w/ Private Garden + Terrace + Garage, 5min Walk to Sta.



Lease Conditions			
LAYOUT	4 BR+S+Den		
SIZE	355.05 m ² /3821.72 ft ²		
RENT	JPY 1,600,000 / month		
Management Fee	-		
Deposit	3 months	Key Money	1 month
Lease Term	Fixed term lease for 36 months		
Available	Now		
Renewal Fee	1 month		
Agent Fee	1 month + tax		
Other Info	Guarantor Company : Available / Air-Con / Separated Toilet / Balcony / Musical Instrument Negotiable / Garden/Terrace / Dishwasher / Bathroom dryer / 2 Toilets		

Building Information			
Completion	Apr, 1989	Earthquake Resistance	New
Structure	RC, 3 floors above		
Car Parking	(Included)		
Bicycle Parking	(Included)		
Music Instrument	Negotiable	Pet	Allowed
Facilities	Motorcycle Parking ((Included)) / House / Within 20 min to Tokyo station by car / Close to Station		

Remarks
Renters Insurance : Required / Pet:additional deposit (1 month)

*The actual Layout & Size may differ slightly from this floor plans & pictures.



HOUSEREP TOKYO INC.

ハウズレップトーキョー株式会社

#301, 1-4-15, Hiroo, Shibuya-ku, Tokyo 150-0012, Japan

+81 (0)3 6427 5860

inquiry@housserrep-tokyo.com

Transaction Type : Intermediate

Agent Fee : 1 month + tax

Website : www.housserrep-tokyo.com

