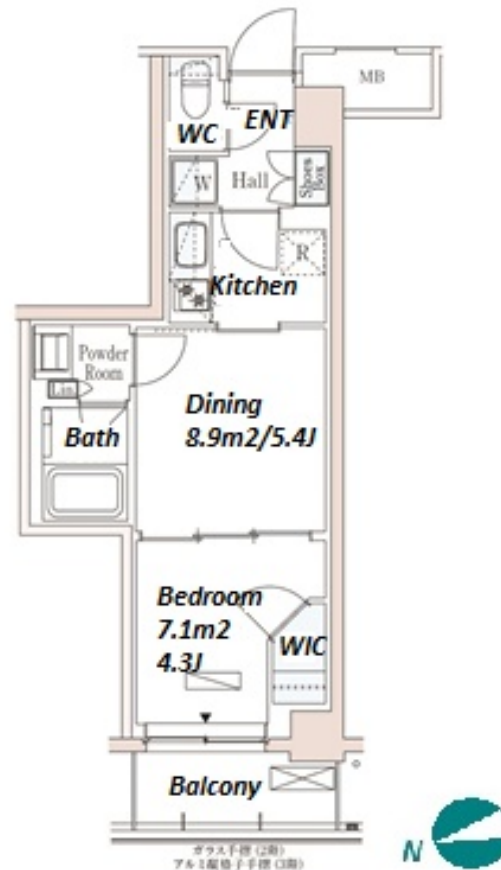


Property Name	PARK AXIS ICHIGAYA SANAICHO	Unit No.	TYPE	Access	Ichigaya Station on Toei Shinjuku Line (6 min) Ichigaya Station on JR Chuo-Sobu Line (7 min)
		307	Apt.		
Address	29-2, Ichigayasanaicho, Shinjuku-Ku, Tokyo				

Low-rise Apt. in Ichiagaya



Lease Conditions		
LAYOUT	1 BR	
SIZE	31.17 m ² /335.51 ft ²	
RENT	JPY 162,000 / month	
Management Fee	JPY10,000/month	
Deposit	2 months	Key Money -
Lease Term	Standard lease for 24 months	
Available	Now	
Renewal Fee	1 month	
Agent Fee	1 month + tax	
Other Info	Key Replacement Fee : JPY20,000 Tax not included / Guarantor Company : TBC / No Key Money / Auto lock / Air-Con / Separated Toilet / Balcony / Penalty Fee for Early Cancellation / CS/CATV / Flooring / Bathroom dryer / WIC	

Building Information			
Completion	Jan, 2021	Earthquake Resistance	New
Structure	RC, 5 floors above		
Car Parking	N/A		
Bicycle Parking	(Included)		
Music Instrument	-	Pet	Allowed
Facilities	Motorcycle Parking (TBC) / Delivery box / Security / Newly-built (~7 y/o)		

*The actual Layout & Size may differ slightly from this floor plans & pictures.



HOUSEREP TOKYO INC.

ハウスレップトーキョー株式会社

#301, 1-4-15, Hiroo, Shibuya-ku, Tokyo 150-0012, Japan

+81 (0)3 6427 5860 inquiry@housserrep-tokyo.com

Transaction Type : Intermediate

Agent Fee : 1 month + tax

Website : www.housserrep-tokyo.com



Remarks
Renters Insurance : Required / Bicycle parking : Registration sticker fee: JPY.2,000+tax / Pet:additional deposit (1 month) / Pet : a small dog or a cat