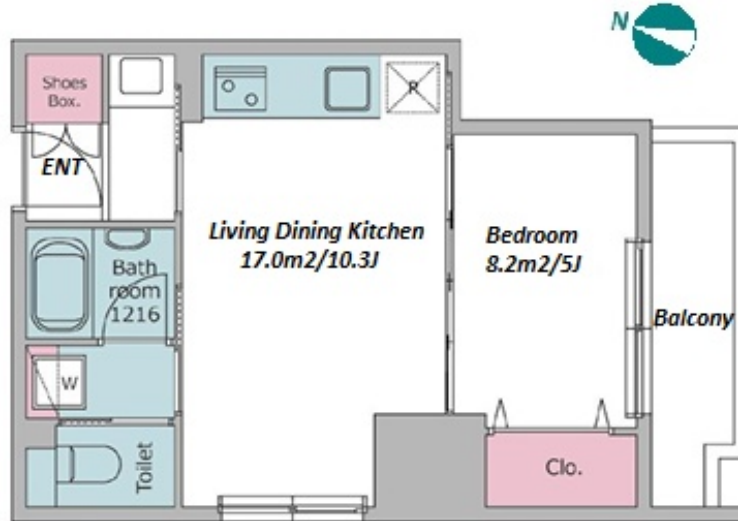
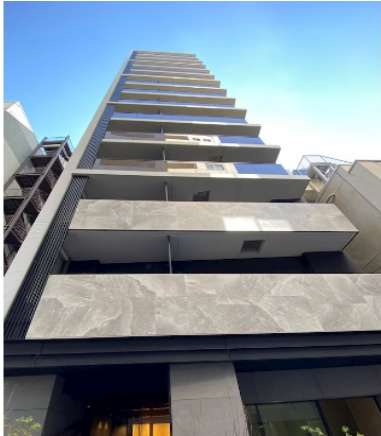


Property Name	CROSS RESIDENCE NIHONBASHIHONCHO	Unit No.	TYPE	Access	Kodenmachou Station on Hibiya Line (2 min) Shinnihonbashi Station on JR Sobu Line (2 min)
		1203	Apt.		
Address	4-15-5, Nihombashihoncho, Chuo-Ku, Tokyo				



Lease Conditions		
LAYOUT	1 BR	
SIZE	38.53 m²/414.73 ft²	
RENT	JPY 204,000 / month	
Management Fee	JPY15,000/month	
Deposit	2 months	Key Money -
Lease Term	Standard lease for 24 months	
Available	Now	
Renewal Fee	1 month	
Agent Fee	1 month + tax	
Other Info	Key Replacement Fee : JPY30,000 Tax not included / Guarantor Company : TBC / No Key Money / Auto lock / Air-Con / Separated Toilet / Balcony / Internet Included / Penalty Fee for Early Cancellation / Flooring / Bathroom dryer	

Building Information		
Completion	Oct, 2023	Earthquake Resistance New
Structure	RC, 15 floors above	
Car Parking	N/A	
Bicycle Parking	for 1 space JPY300 + tax / month	
Music Instrument	-	Pet Negotiable
Facilities	Delivery box / Elevator / Security / Close to Station / High-rise / Newly-built (~1 y/o)	

Remarks
Renters Insurance : Required

*The actual Layout & Size may differ slightly from this floor plans & pictures.



HOUSEREP TOKYO INC.

ハウスレップトーキョー株式会社

#301, 1-4-15, Hiroo, Shibuya-ku, Tokyo 150-0012, Japan

+81 (0)3 6427 5860

inquiry@housserrep-tokyo.com

Transaction Type : Intermediate

Agent Fee : 1 month + tax

Website : www.housserrep-tokyo.com

