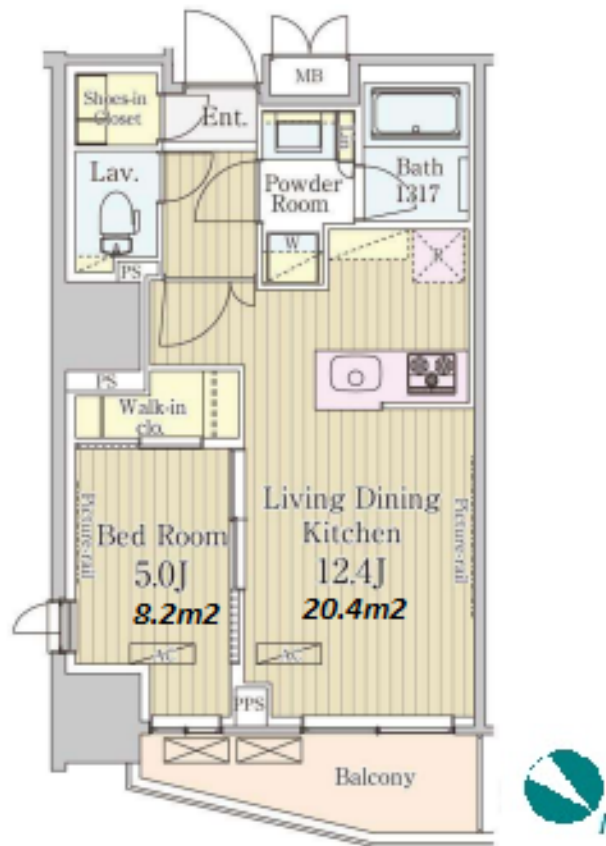
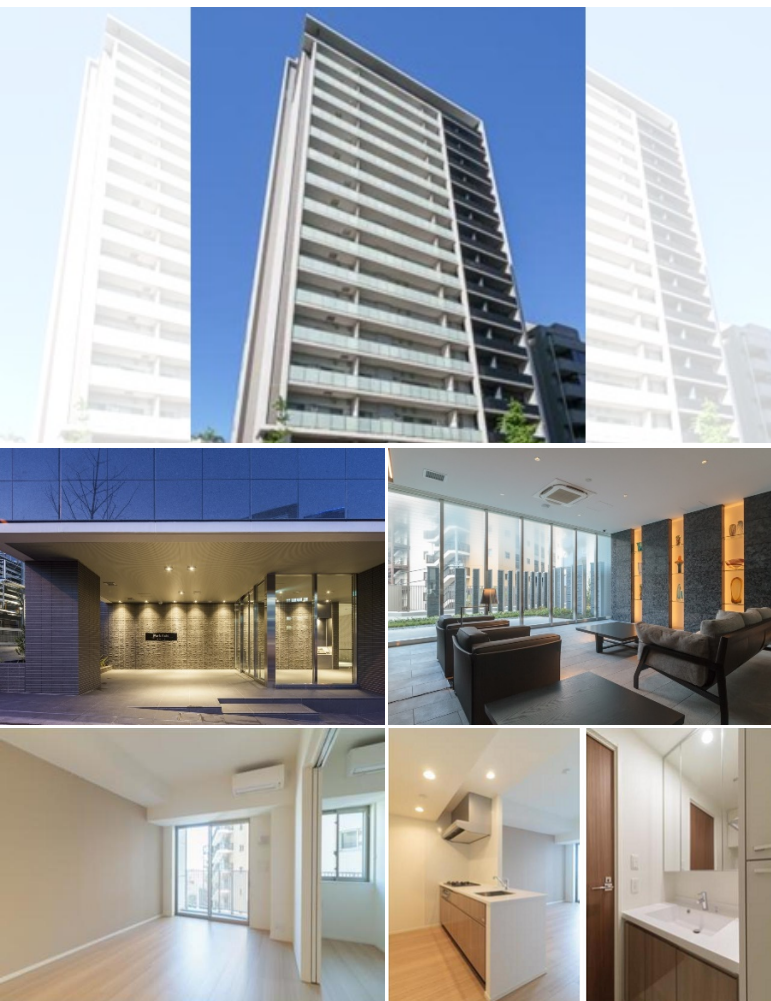


Property Name	PARK AXIS OCHANOMIZU	Unit No.	TYPE	Access	Akihabara Station on JR Yamanote Line (7 min) Ochanomizu Station on JR Chuo-Sobu Line (8 min) Ochanomizu Station on Chiyoda Line (8 min)
		1105	Apt.		
Address	1-2-7, Yushima, Bunkyo-Ku, Tokyo				

## High-rise Apt in Ochanomizu, near Akihabara



Lease Conditions	
LAYOUT	1 BR
SIZE	42.19 m <sup>2</sup> /454.12 ft <sup>2</sup>
RENT	JPY 205,000 / month
Management Fee	JPY15,000/month
Deposit	2 months
Key Money	1 month
Lease Term	Standard lease for 24 months
Available	End, Aug, 2024
Renewal Fee	1 month
Agent Fee	1 month + tax
Other Info	Key Replacement Fee : JPY20,000 Tax not included / Guarantor Company : TBC / Auto lock / Air-Con / Separated Toilet / Balcony / Internet Included / Penalty Fee for Early Cancellation / CS/CATV / Flooring / Bathroom dryer / WIC

Building Information		
Completion	Mar, 2017	Earthquake Resistance New
Structure	RC, 17 floors above	
Car Parking	extra charge	
Bicycle Parking	for 1 space ( Included )	
Music Instrument	-	Pet N/A
Facilities	Motorcycle Parking (TBC) / Delivery box / Elevator / High-rise / Newly-built (~7 y/o)	

Remarks
Renters Insurance : Required

\*The actual Layout & Size may differ slightly from this floor plans & pictures.



# HOUSEREP TOKYO INC.

ハウスレップトーキョー株式会社

#301, 1-4-15, Hiroo, Shibuya-ku, Tokyo 150-0012, Japan

+81 (0)3 6427 5860

inquiry@housserep-tokyo.com

Transaction Type : Intermediate

Agent Fee : 1 month + tax

Website : www.housserep-tokyo.com

