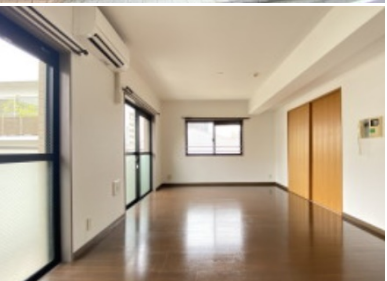
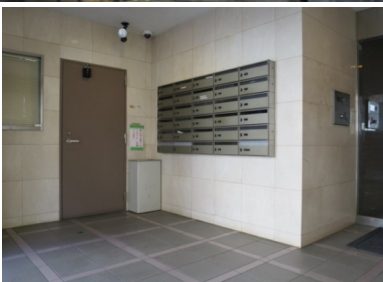


Property Name	ATLAS TOMIGAYA	Unit No.	TYPE	Access	Yoyogikouenn Station on Chiyoda Line (9 min) Yoyogihachimann Station on Odakyu Line (10 min)
		403	Apt.		
Address	2-13-15, Tomigaya, Shibuya-Ku, Tokyo				

## Low-rise apartment near Yoyogi Park



### Lease Conditions

LAYOUT	3 BR		
SIZE	68.04 m <sup>2</sup> /732.37 ft <sup>2</sup>		
RENT	JPY 290,000 / month		
Management Fee	JPY10,000/month		
Deposit	2 months	Key Money	1 month
Lease Term	Standard lease for 24 months		
Available	Now		
Renewal Fee	1 month		
Agent Fee	1 month + tax		
Other Info	Key Replacement Fee : JPY40,000 Tax not included / Guarantor Company : TBC / Auto lock / Air-Con / Separated Toilet / Balcony / Internet (Extra Charge) / Flooring / Bathroom dryer		

### Building Information

Completion	Mar, 2001	Earthquake Resistance	New
Structure	RC, 4 floors above		
Car Parking	-		
Bicycle Parking	( Included )		
Music Instrument	-	Pet	-
Facilities	Delivery box / Elevator / Security / Low-rise		

### Remarks

Renters Insurance : Required

\*The actual Layout & Size may differ slightly from this floor plans & pictures.



## HOUSEREP TOKYO INC.

ハウズレップトーキョー株式会社

#301, 1-4-15, Hiroo, Shibuya-ku, Tokyo 150-0012, Japan

+81 (0)3 6427 5860

inquiry@housserrep-tokyo.com

Transaction Type : Intermediate

Agent Fee : 1 month + tax

Website : www.housserrep-tokyo.com

