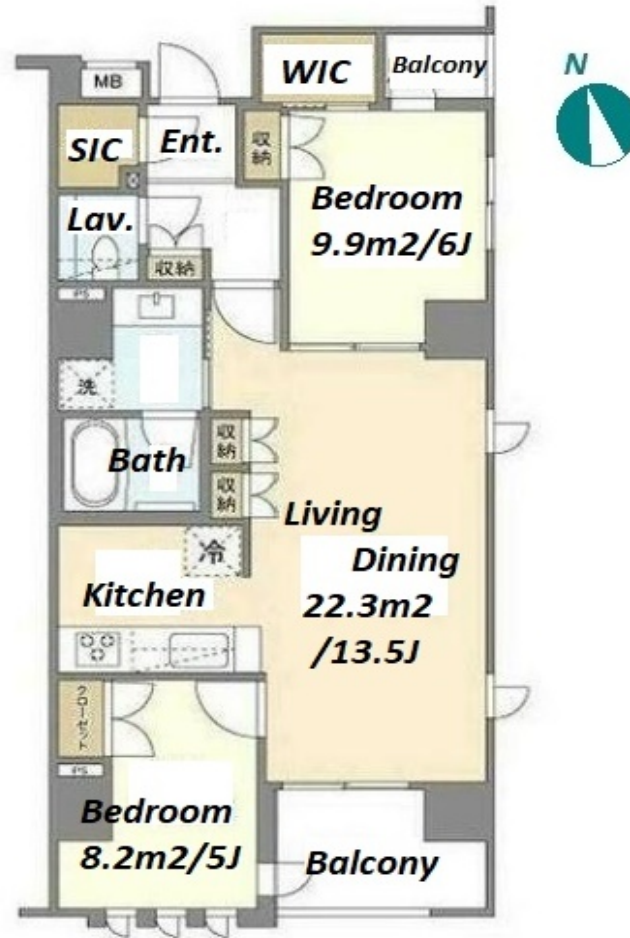
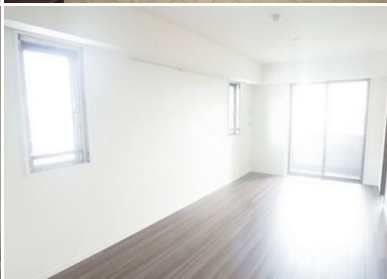


Property Name	VINA PARK TOMIGAYA	Unit No.	TYPE	Access	Yoyogikouenn Station on Chiyoda Line (12 min) Yoyogihachimann Station on Odakyu Line (13 min)
		301	Apt.		
Address	2-19-6, Tomigaya, Shibuya-Ku, Tokyo				

Mid-rise apartment close to Yoyogi Park



Lease Conditions			
LAYOUT	2 BR		
SIZE	65.43 m²/704.28 ft²		
RENT	JPY 280,000 / month		
Management Fee	JPY10,000/month		
Deposit	2 months	Key Money	1 month
Lease Term	Fixed term lease for 60 months		
Available	End, Jun, 2024		
Renewal Fee	-		
Agent Fee	1 month + tax		
Other Info	Guarantor Company : TBC / Auto lock / Air-Con / Separated Toilet / Balcony / Musical Instrument Negotiable / Flooring / Floor Heating / Bathroom dryer / WIC / Corner Unit		

Building Information			
Completion		Earthquake Resistance	New
Structure			
Car Parking	-		
Bicycle Parking	-		
Music Instrument	Negotiable	Pet	N/A
Facilities	Delivery box / Elevator / 24h Garbage Drop-off		

Remarks
Renters Insurance : Required

*The actual Layout & Size may differ slightly from this floor plans & pictures.



HOUSEREP TOKYO INC.

ハウスレップトーキョー株式会社

#301, 1-4-15, Hiroo, Shibuya-ku, Tokyo 150-0012, Japan

+81 (0)3 6427 5860

inquiry@housserep-tokyo.com

Transaction Type : Intermediate

Agent Fee : 1 month + tax

Website : www.housserep-tokyo.com

