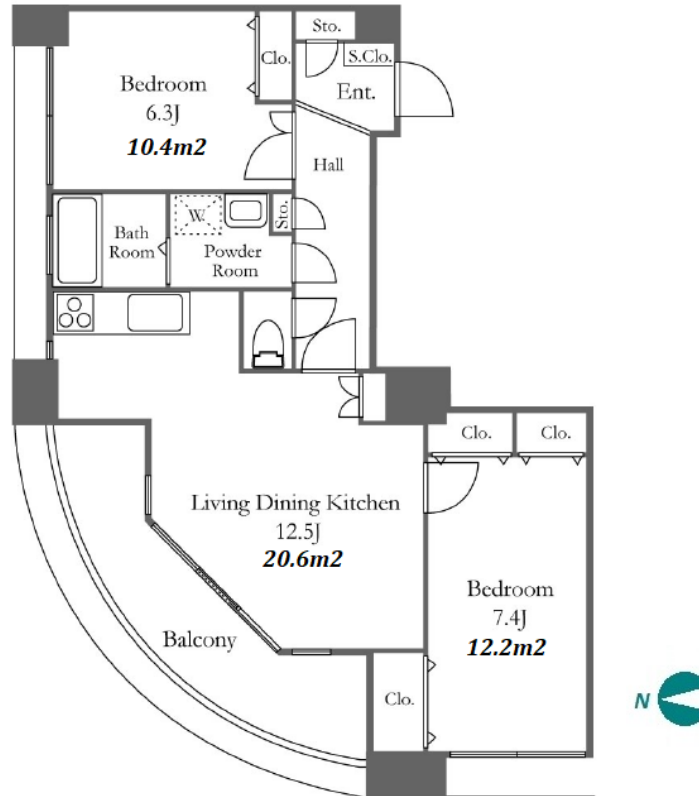


Property Name	RIVER CITY 21 EAST TOWERS II	Unit No.	TYPE	Access	Tsukishima Station on Yurakucho Line (8 min) Hacchoubori Station on JR Keiyo Line (12 min)
		415	Apt.		
Address	2-1-2, Tsukuda, Chuo-Ku, Tokyo				

Tower Residence near Sumida River / Tokyo Bay



Lease Conditions

LAYOUT	2 BR		
SIZE	63.53 m ² /683.83 ft ²		
RENT	JPY 275,000 / month		
Management Fee	JPY10,000/month		
Deposit	2 months	Key Money	-
Lease Term	Standard lease for 24 months		
Available	24, Jun, 2024		
Renewal Fee	1 month		
Agent Fee	1 month + tax		
Other Info	Key Replacement Fee : JPY15,000 Tax not included / Guarantor Company : TBC / No Key Money / Auto lock / Air-Con / Separated Toilet / Balcony / Penalty Fee for Early Cancellation / Nice Views / Flooring / Floor Heating / IH Stoves / Bathroom dryer / Corner Unit		

Building Information

Completion	Aug, 2000	Earthquake Resistance	New
Structure	RC, 43 floors above and 2 basement floors		
Car Parking	JPY28,800 + tax / month		
Bicycle Parking	for 1 space (Included)		
Music Instrument	-	Pet	N/A
Facilities	Motorcycle Parking (TBC) / Trunk Room (JPY3,000 + tax / month) / Delivery box / Elevator / Sky lounge / Security		

Remarks

Renters Insurance : Required / Parking : 3 months deposit

*The actual Layout & Size may differ slightly from this floor plans & pictures.



HOUSEREP TOKYO INC.

ハウスレップトーキョー株式会社

#301, 1-4-15, Hiroo, Shibuya-ku, Tokyo 150-0012, Japan

+81 (0)3 6427 5860

inquiry@housserrep-tokyo.com

Transaction Type : Intermediate

Agent Fee : 1 month + tax

Website : www.housserrep-tokyo.com

