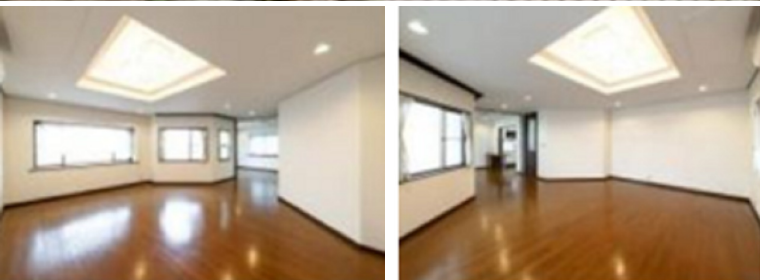


Property Name	NAKACHO 181 HOUSE	Unit No.	TYPE	Access	Ushigomekagurazaka Station on Oedo Line (4 min) Kagurazaka Station on Tozai Line (8 min) Iidabashi Station on JR Chuo-Sobu Line (11 min)
			House		
Address	18-1, Nakacho, Shinjuku-Ku, Tokyo				



## Lease Conditions

LAYOUT	4 BR		
SIZE	200.36 m <sup>2</sup> /2156.65 ft <sup>2</sup>		
RENT	JPY 650,000 / month		
Management Fee	-		
Deposit	2 months	Key Money	1 month
Lease Term	Standard lease for 24 months		
Available	Now		
Renewal Fee	1 month		
Agent Fee	1 month + tax		
Other Info	Air-Con / Separated Toilet / Balcony / Loft/Maisonnette / Musical Instrument Negotiable / Dishwasher / WIC / 2 Toilets		

## Building Information

Completion	Jan, 1991	Earthquake Resistance	New
Structure	Wooden, 2 floors above		
Car Parking	for 1 space ( Included )		
Bicycle Parking	-		
Music Instrument	Negotiable	Pet	Negotiable
Facilities	Close to Station		

## Remarks

Renters Insurance : Required

\*The actual Layout &amp; Size may differ slightly from this floor plans &amp; pictures.



HOUSEREP TOKYO INC.

ハウスレップトーキョー株式会社

#301, 1-4-15, Hiroo, Shibuya-ku, Tokyo 150-0012, Japan

+81 (0)3 6427 5860

inquiry@housserrep-tokyo.com

Transaction Type : Intermediate

Agent Fee : 1 month + tax

Website : www.housserrep-tokyo.com

