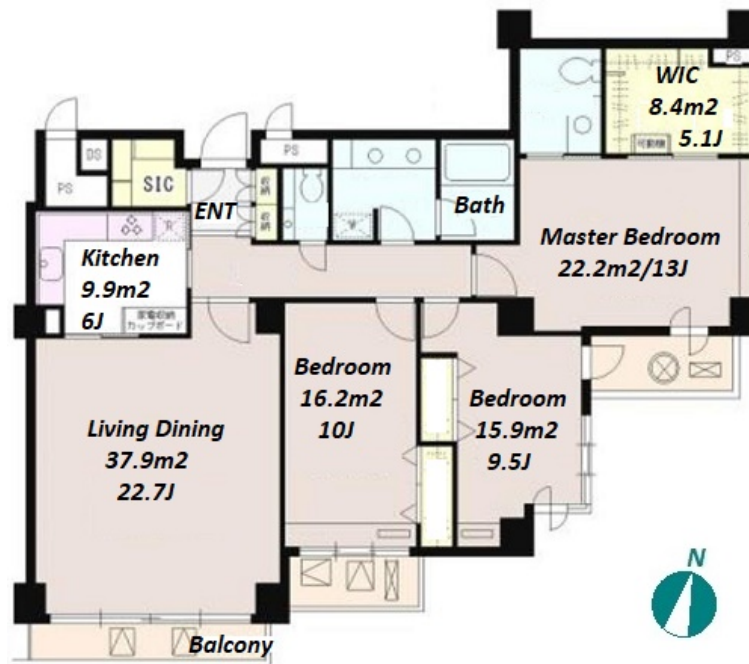


Property Name	ICHIBANCHO 18 PARK MANSION	Unit No.	TYPE	Access	Hannzoumonn Station on Hanzomon Line (3 min)
		403	Apt.		
Address	18-1, Ichibancho, Chiyoda-Ku, Tokyo				

Vintage Mid-rise Apt. in Ichibancho



Lease Conditions	
LAYOUT	3 BR
SIZE	149.56 m ² /1609.85 ft ²
RENT	JPY 650,000 / month
Management Fee	JPY20,000/month
Deposit	2 months
Key Money	1 month
Lease Term	Standard lease for 24 months
Available	Now
Renewal Fee	1 month
Agent Fee	1 month + tax
Other Info	Key Replacement Fee : JPY20,000 Tax not included / Auto lock / Air-Con / Separated Toilet / Balcony / Penalty Fee for Early Cancellation / Dishwasher / Bathroom dryer / 2 Toilets

Building Information	
Completion	Mar, 1984
Earthquake Resistance	New
Structure	RC, 8 floors above and 1 basement floors
Car Parking	-
Bicycle Parking	-
Music Instrument	-
Pet	-
Facilities	Janitor / Elevator / Close to Station

Remarks
Renters Insurance : Required

*The actual Layout & Size may differ slightly from this floor plans & pictures.



HOUSEREP TOKYO INC.

ハウスレップトーキョー株式会社

#301, 1-4-15, Hiroo, Shibuya-ku, Tokyo 150-0012, Japan

+81 (0)3 6427 5860

inquiry@housserep-tokyo.com

Transaction Type : Intermediate

Agent Fee : 1 month + tax

Website : www.housserep-tokyo.com

