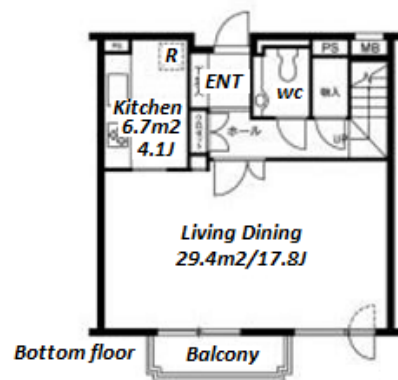
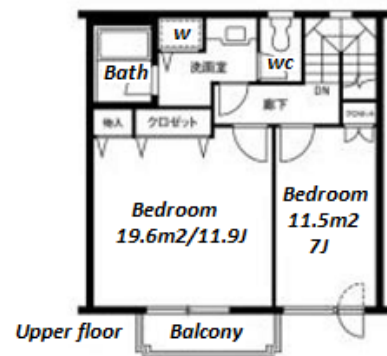
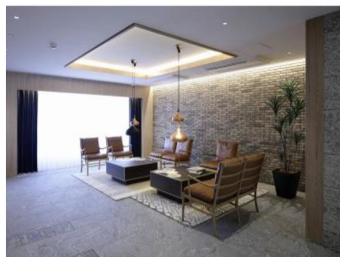


Property Name	SANGUBASHI MANSION	Unit No.	TYPE	Access	Sannguubashi Station on Odakyu Line (5 min) Hatsudai Station on Keio Line (5 min)
		303	Apt.		
Address	4-41-7, Yoyogi, Shibuya-Ku, Tokyo				

South facing low rise apartment in quiet residential area



Lease Conditions	
LAYOUT	2 BR
SIZE	97.32 m ² /1047.54 ft ²
RENT	JPY 450,000 / month
Management Fee	JPY20,000/month
Deposit	2 months
Key Money	-
Lease Term	Standard lease for 24 months
Available	Early, Sep, 2024
Renewal Fee	1 month
Agent Fee	1 month + tax
Other Info	No Key Money / Auto lock / Air-Con / Separated Toilet / Balcony / Loft/Maisonnette / Internet (Extra Charge) / Penalty Fee for Early Cancellation / CS/CATV / Flooring / Dishwasher / Bathroom dryer / 2 Toilets

Building Information			
Completion	Jul, 1993	Earthquake Resistance	New
Structure	RC, 7 floors above and 2 basement floors		
Car Parking	JPY38,000 ~ 70,000 + tax / month		
Bicycle Parking	for 1 space (Included)		
Music Instrument	-	Pet	N/A
Facilities	Near Large Parks / Janitor / Elevator / Close to Station		

Remarks
Renters Insurance : Required / Key replacement: extra charge / Free rent campaign: 1 month

*The actual Layout & Size may differ slightly from this floor plans & pictures.



HOUSEREP TOKYO INC.

ハウズレップトーキョー株式会社

#301, 1-4-15, Hiroo, Shibuya-ku, Tokyo 150-0012, Japan

+81 (0)3 6427 5860

inquiry@housserep-tokyo.com

Transaction Type : Intermediate

Agent Fee : 1 month + tax

Website : www.housserep-tokyo.com

