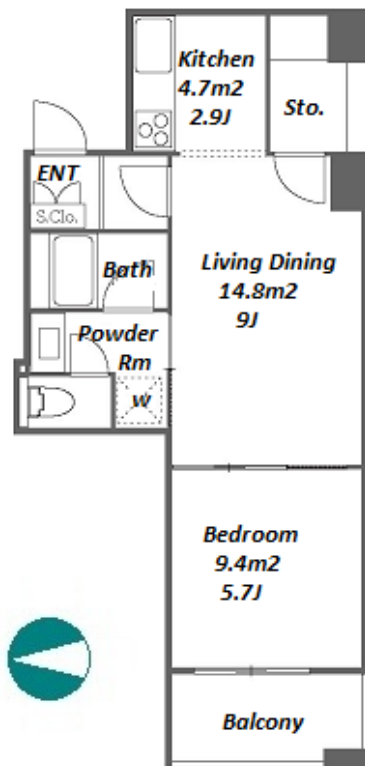


Property Name	RIVER CITY 21 EAST TOWERS II	Unit No.	TYPE	Access	Tsukishima Station on Yurakucho Line (8 min) Hacchoubori Station on JR Keiyo Line (12 min)
		2814	Apt.		
Address	2-1-2, Tsukuda, Chuo-Ku, Tokyo				

## Tower Residence near Sumida River / Tokyo Bay



\*The actual Layout & Size may differ slightly from this floor plans & pictures.

Lease Conditions	
LAYOUT	1 BR
SIZE	44.2 m <sup>2</sup> /475.76 ft <sup>2</sup>
RENT	JPY 185,000 / month
Management Fee	JPY10,000/month
Deposit	2 months
Key Money	1 month
Lease Term	Standard lease for 24 months
Available	Now
Renewal Fee	1 month
Agent Fee	1 month + tax
Other Info	Key Replacement Fee : JPY15,000 Tax not included / Guarantor Company : TBC / Auto lock / Renovated / Air-Con / Separated Toilet / Balcony / Nice Views / Flooring / IH Stoves / Bathroom dryer

Building Information	
Completion	Aug, 2000
Earthquake Resistance	New
Structure	RC, 43 floors above and 2 basement floors
Car Parking	JPY28,800/ month
Bicycle Parking	for 1 space ( Included )
Music Instrument	-
Pet	-
Facilities	Motorcycle Parking (TBC) / Trunk Room (JPY3,000 + tax / month) / Delivery box / Elevator / Sky lounge / Security

Remarks
Renters Insurance : Required



HOUSEREP TOKYO INC.

ハウズレップトーキョー株式会社

#301, 1-4-15, Hiroo, Shibuya-ku, Tokyo 150-0012, Japan

+81 (0)3 6427 5860

inquiry@housserrep-tokyo.com

Transaction Type : Intermediate

Agent Fee : 1 month + tax

Website : www.housserrep-tokyo.com

