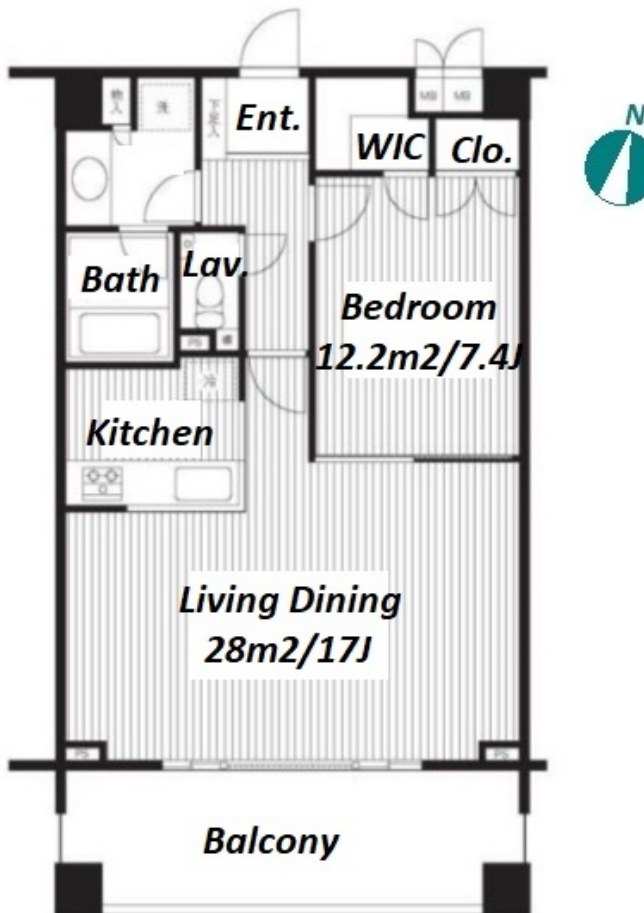


Property Name	GARND HEIGHTS YOYOGI	Unit No.	TYPE	Access	Hatsudai Station on Keio Line (9 min) Yoyogi Station on JR Yamanote Line (12 min)
		310	Apt.		
Address	3-37-7, Yoyogi, Shibuya-Ku, Tokyo				



## Lease Conditions

LAYOUT	1 BR		
SIZE	62.15 m²/668.97 ft²		
RENT	JPY 221,000 / month		
Management Fee	JPY8,000/month		
Deposit	2 months	Key Money	1 month
Lease Term	Standard lease for 24 months		
Available	Now		
Renewal Fee	1 month		
Agent Fee	1 month + tax		
Other Info	Key Replacement Fee : JPY20,000 Tax not included / Guarantor Company : TBC / Auto lock / Air-Con / Separated Toilet / Balcony / Flooring / Floor Heating / Bathroom dryer / WIC		

## Building Information

Completion	Jan, 2006	Earthquake Resistance	New
Structure	RC, 15 floors above		
Car Parking	extra charge		
Bicycle Parking	for 1 space ( Included )		
Music Instrument	-	Pet	N/A
Facilities	Motorcycle Parking (extra charge) / Near Large Parks / Elevator		

## Remarks

Renters Insurance : Required

\*The actual Layout &amp; Size may differ slightly from this floor plans &amp; pictures.



HOUSEREP TOKYO INC.

ハウスレップトーキョー株式会社

#301, 1-4-15, Hiroo, Shibuya-ku, Tokyo 150-0012, Japan

+81 (0)3 6427 5860

inquiry@housserrep-tokyo.com

Transaction Type : Intermediate

Agent Fee : 1 month + tax

Website : www.housserrep-tokyo.com

