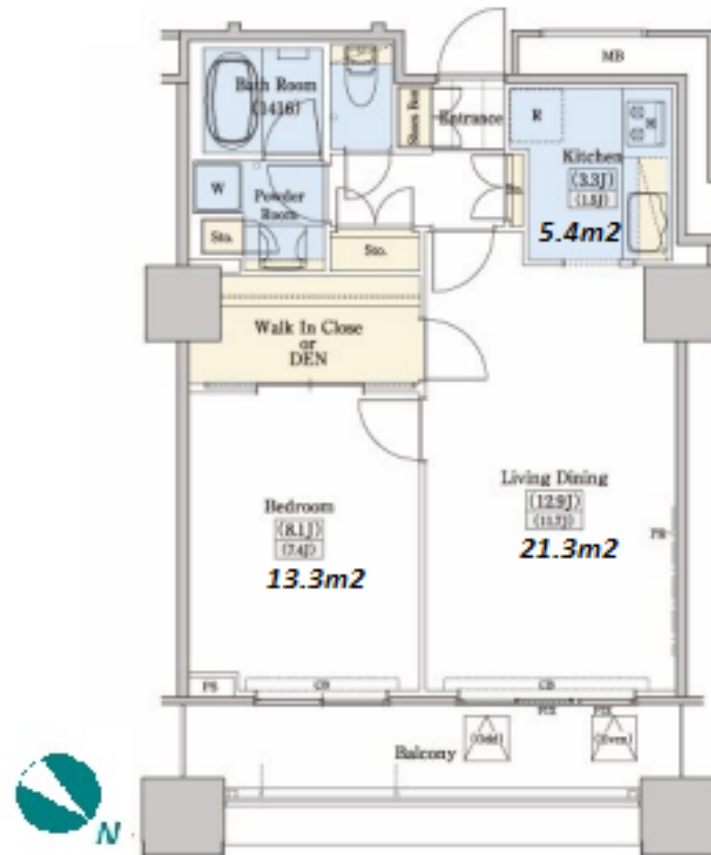
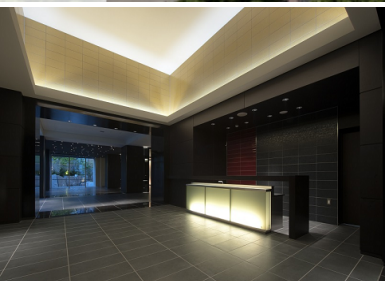


Property Name	RESIDIA TOWER KAMI-IKEBUKURO(TOWER)	Unit No.	TYPE	Access	Ootsuka Station on JR Yamanote Line (9 min) Nishisugamo Station on Mita Line (12 min)
		TW1011	Apt.		
Address	1-37-22, Kamiikebukuro, Toshima-Ku, Tokyo				



Lease Conditions		
LAYOUT	1 BR	
SIZE	57.24 m²/616.12 ft²	
RENT	JPY 214,000 / month	
Management Fee	JPY15,000/month	
Deposit	2 months	Key Money 1 month
Lease Term	Fixed term lease for 36 months	
Available	Now	
Renewal Fee	-	
Agent Fee	1 month + tax	
Other Info	Key Replacement Fee : JPY20,000 Tax not included / Guarantor Company : TBC / Auto lock / Air-Con / Separated Toilet / Balcony / Internet (Extra Charge) / Penalty Fee for Early Cancellation / Musical Instrument Negotiable / CS/CATV / Flooring / Bathroom dryer / WIC	

Building Information			
Completion	May, 2009	Earthquake Resistance	New
Structure	RC, 22 floors above		
Car Parking	JPY25,000 ~ 39,000 + tax / month		
Bicycle Parking	N/A		
Music Instrument	Negotiable	Pet	Allowed
Facilities	Front desk / Delivery box / Elevator / Security / 24h Garbage Drop-off / High-rise		

*The actual Layout & Size may differ slightly from this floor plans & pictures.



HOUSEREP TOKYO INC.

ハウスレップトーキョー株式会社

#301, 1-4-15, Hiroo, Shibuya-ku, Tokyo 150-0012, Japan

+81 (0)3 6427 5860

inquiry@housserrep-tokyo.com

Transaction Type : Intermediate

Agent Fee : 1 month + tax

Website : www.housserrep-tokyo.com



Remarks
Fixed term lease : Re-contract fee: 1 month of new rent / Internet subscription fee: 1,500yen+tax/month / Parking : 1 month deposit / Pet:additional deposit (1 month) / Pet : a small dog or a cat