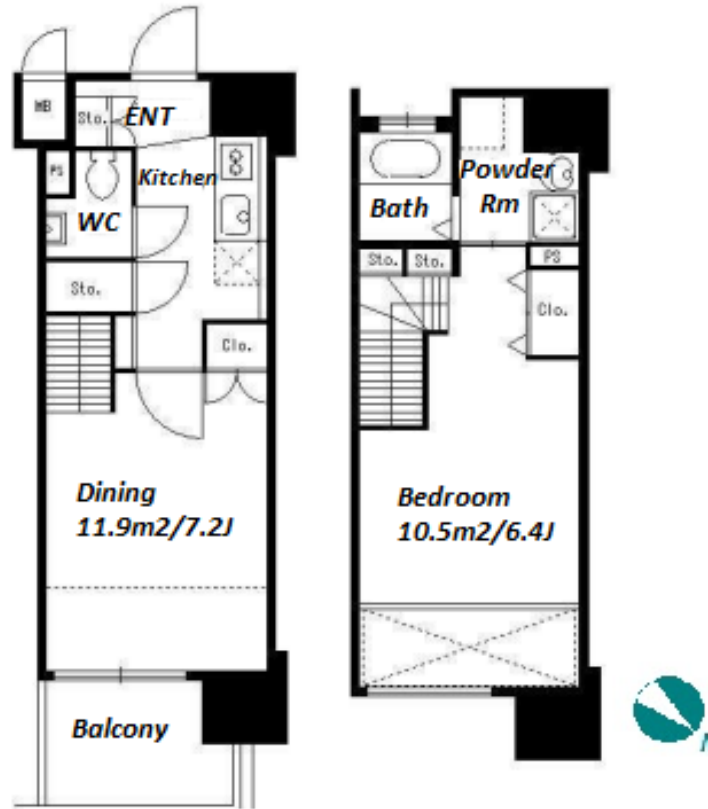


Property Name	DORMOUSE CASTLE	Unit No.	TYPE	Access	Keikyukawasaki Station on Keikyu Line (8 min) Kawasaki Station on JR Keihin Tohoku Line (11 min)
		1303	Apt.		
Address	2-7-7, Honcho, Kawasaki-Ku, Kawasaki-Shi, Kanagawa				

Stylish Mid-rise Apt. in Kawasaki



Lease Conditions	
LAYOUT	1 BR
SIZE	43.71 m ² /470.49 ft ²
RENT	JPY 129,000 / month
Management Fee	JPY10,000/month
Deposit	2 months
Key Money	1 month
Lease Term	Standard lease for 24 months
Available	End, Jun, 2024
Renewal Fee	1 month
Agent Fee	1 month + tax
Other Info	Key Replacement Fee : JPY20,000 Tax not included / Guarantor Company : TBC / Auto lock / Air-Con / Separated Toilet / Balcony / Loft/Maisonnette / Internet (Extra Charge) / Flooring / IH Stoves / Bathroom dryer

Building Information	
Completion	Feb, 2010
Earthquake Resistance	New
Structure	RC, 14 floors above
Car Parking	N/A
Bicycle Parking	TBC
Music Instrument	-
Pet	N/A
Facilities	Delivery box / Elevator

*The actual Layout & Size may differ slightly from this floor plans & pictures.



HOUSEREP TOKYO INC.

ハウスレップトーキョー株式会社

#301, 1-4-15, Hiroo, Shibuya-ku, Tokyo 150-0012, Japan

+81 (0)3 6427 5860

inquiry@housserrep-tokyo.com

Transaction Type : Intermediate

Agent Fee : 1 month + tax

Website : www.housserrep-tokyo.com



Remarks
Renters Insurance : Required