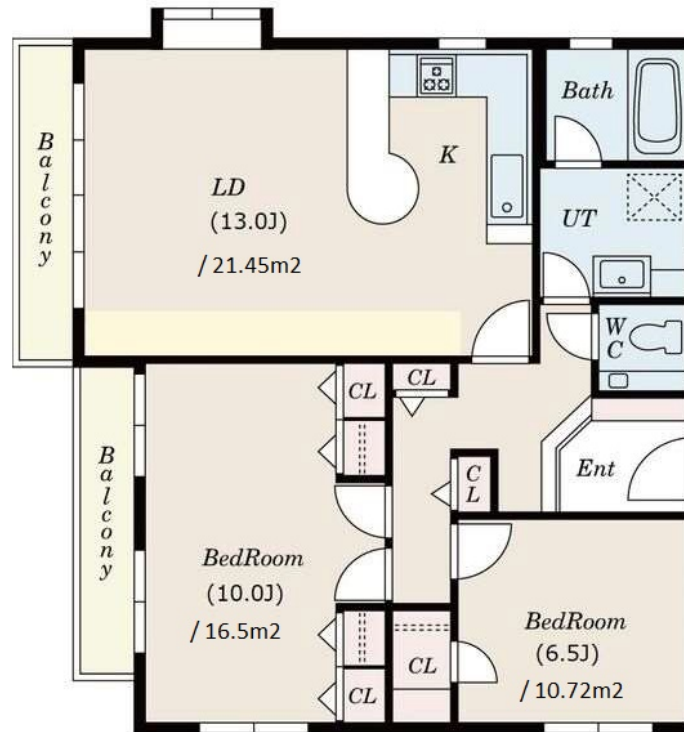


Property Name	QUINTET HARAJUKU	Unit No.	TYPE	Access	Gaienmae Station on Ginza Line (10 min)
		R6 (2F)	Apt.		Meijijinguumae harajuku Station on Chiyoda Line (11 min)
Address	3-33-13, Jingumae, Shibuya-Ku, Tokyo				Harajuku Station on JR Yamanote Line (12 min)
					Senndagaya Station on JR Chuo-Sobu Line (16 min)

Cozy Low Rise Apt. in Jingumae, near "Gaienmae" & "Harajuku" stn.



*The actual Layout & Size may differ slightly from this floor plans & pictures.

Lease Conditions	
LAYOUT	2 BR
SIZE	93.5 m ² /1006.42 ft ²
RENT	JPY 540,000 / month
Management Fee	JPY10,000/month
Deposit	2 months
Key Money	-
Lease Term	Standard lease for 24 months
Available	Now
Renewal Fee	1 month
Agent Fee	1 month + tax
Other Info	Key Replacement Fee : JPY25,000 Tax not included / Guarantor Company : TBC / Renovated / Air-Con / Separated Toilet / Balcony / Flooring / IH Stoves / Corner Unit

Building Information		
Completion	Nov, 1987	Earthquake Resistance New
Structure	RC, 3 floors above	
Car Parking	TBC	
Bicycle Parking	TBC	
Music Instrument	-	Pet Allowed
Facilities	Near Large Parks / Low-rise	

Remarks
Renters Insurance : Required / Tenant support fee: 1,650yen/ month / Pet:additional deposit (1 month) + depreciation fee (1 month)



HOUSEREP TOKYO INC.

ハウズレップトーキョー株式会社

#301, 1-4-15, Hiroo, Shibuya-ku, Tokyo 150-0012, Japan

+81 (0)3 6427 5860

inquiry@housserrep-tokyo.com

Transaction Type : Intermediate

Agent Fee : 1 month + tax

Website : www.housserrep-tokyo.com

