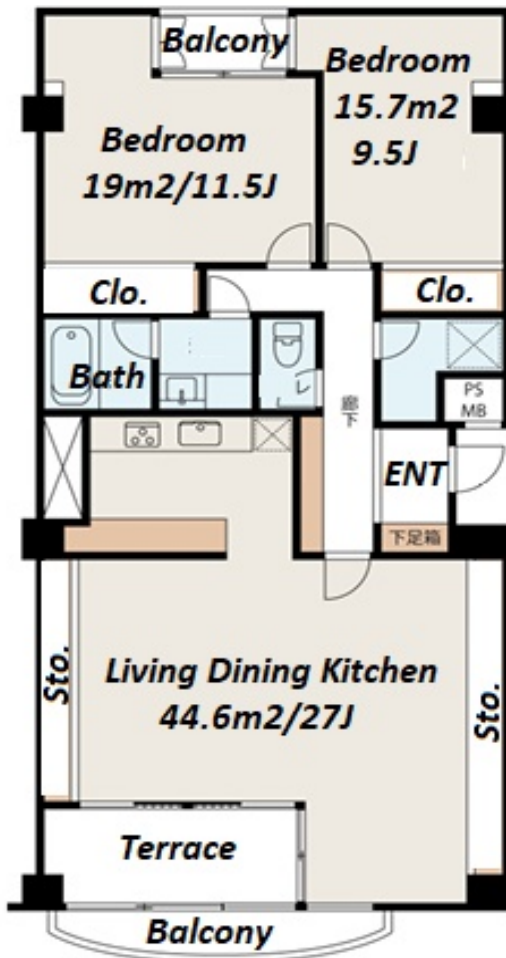
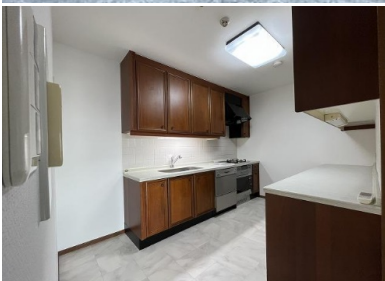
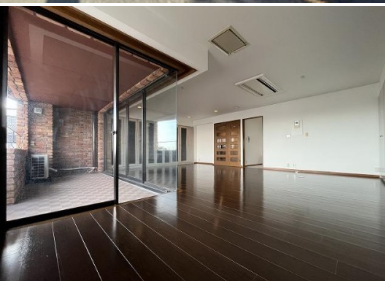


Property Name	ROYAL PALACE KAMIMEGURO	Unit No.	TYPE	Access	Yuutennji Station on Toyoko Line (11 min) Nakameguro Station on Hibiya Line (13 min)
		504	Apt.		
Address	5-26-21, Kamimeguro, Meguro-Ku, Tokyo				



*The actual Layout & Size may differ slightly from this floor plans & pictures.

Lease Conditions			
LAYOUT	2 BR		
SIZE	116.62 m ² /1255.28 ft ²		
RENT	JPY 488,000 / month		
Management Fee	-		
Deposit	2 months	Key Money	1 month
Lease Term	Fixed term lease for 24 months		
Available	Negotiable		
Renewal Fee	-		
Agent Fee	1 month + tax		
Other Info	Key Replacement Fee : JPY20,000 Tax not included / Renovated / Air-Con / Separated Toilet / Balcony / Penalty Fee for Early Cancellation / Flooring / Dishwasher / Bathroom dryer		

Building Information			
Completion	Dec, 1991	Earthquake Resistance	New
Structure	SRC, 5 floors above and 3 basement floors		
Car Parking	JPY30,000 + tax / month		
Bicycle Parking	-		
Music Instrument	-	Pet	Allowed
Facilities	Low-rise		

Remarks	
Fixed term lease : Re-contract fee : 1 month / Renters Insurance : Required / Tenant support fee: 15,000yen/2yrs / Pet:additional deposit (1 month)	



HOUSEREP TOKYO INC.

ハウズレップトーキョー株式会社

#301, 1-4-15, Hiroo, Shibuya-ku, Tokyo 150-0012, Japan

+81 (0)3 6427 5860

inquiry@housserrep-tokyo.com

Transaction Type : Intermediate

Agent Fee : 1 month + tax

Website : www.housserrep-tokyo.com

