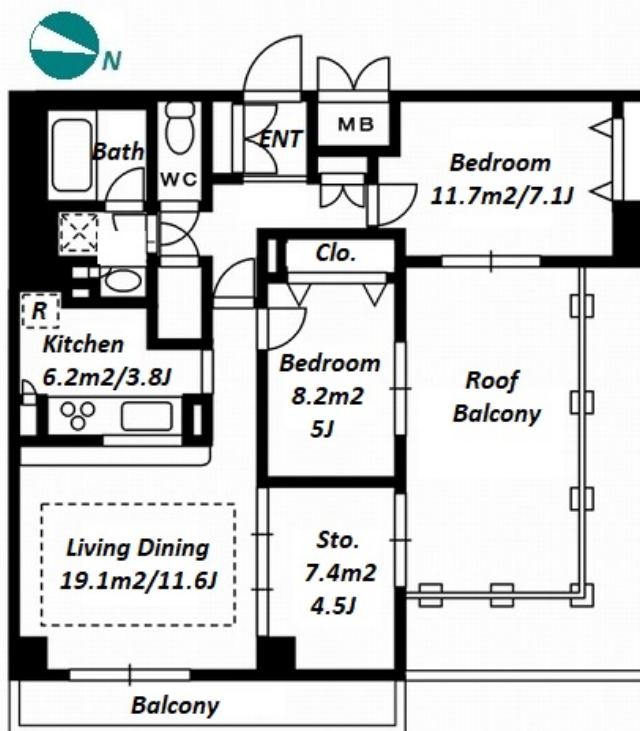
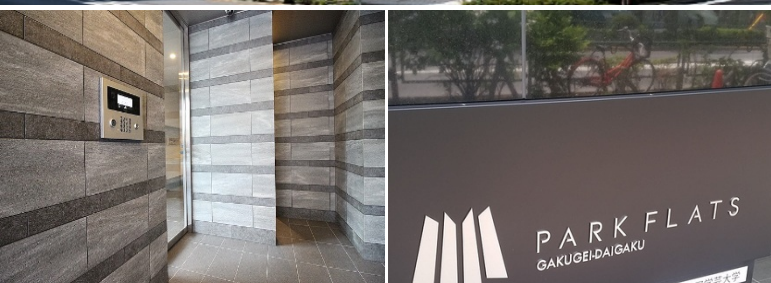


Property Name	PARK FLATS GAKUGEIDAIGAKU	Unit No.	TYPE	Access	Gakugeidaigaku Station on Toyoko Line (10 min)
		606	Apt.		
Address	3-1-1, Nozawa, Setagaya-Ku, Tokyo				

Apartment in Gakugeidaigaku (Supermarket on 1F)



Lease Conditions	
LAYOUT	2 BR+S
SIZE	73.67 m²/792.97 ft²
RENT	JPY 305,000 / month
Management Fee	JPY15,000/month
Deposit	2 months
Key Money	1 month
Lease Term	Standard lease for 24 months
Available	Now
Renewal Fee	1 month
Agent Fee	1 month + tax
Other Info	Key Replacement Fee : JPY38,000 Tax not included / Auto lock / Air-Con / Separated Toilet / Balcony / Penalty Fee for Early Cancellation / Flooring / Bathroom dryer

Building Information			
Completion	Sep, 2009	Earthquake Resistance	New
Structure	RC, 7 floors above		
Car Parking	JPY34,000 ~ 35,000 + tax / month		
Bicycle Parking	N/A		
Music Instrument	-	Pet	N/A
Facilities	Delivery box / Elevator / Security		

Remarks
Renters Insurance : Required / Parking : 1 month deposit

*The actual Layout & Size may differ slightly from this floor plans & pictures.



HOUSEREP TOKYO INC.

ハウスレップトーキョー株式会社

#301, 1-4-15, Hiroo, Shibuya-ku, Tokyo 150-0012, Japan

+81 (0)3 6427 5860

inquiry@housserrep-tokyo.com

Transaction Type : Intermediate

Agent Fee : 1 month + tax

Website : www.housserrep-tokyo.com

